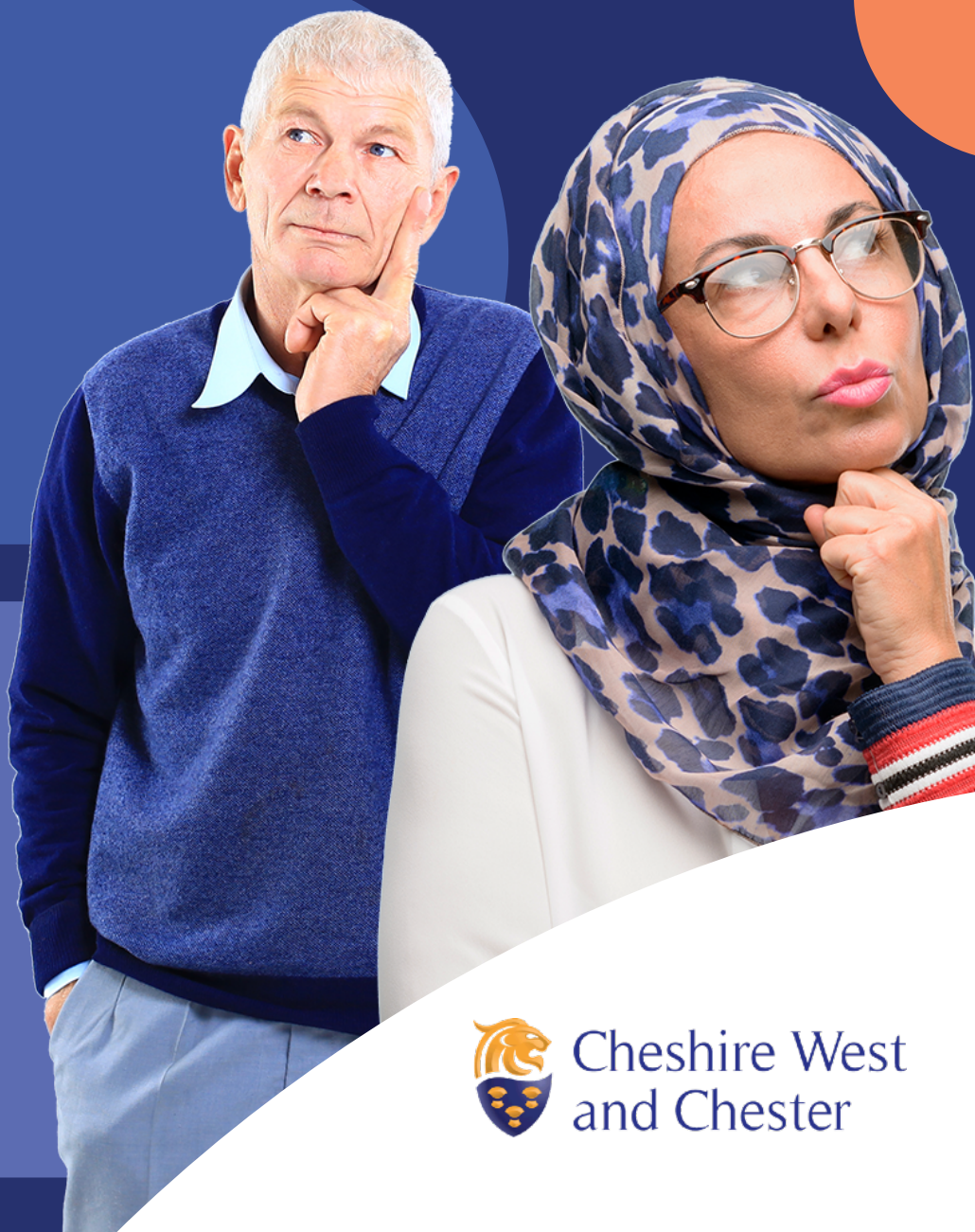


Cheshire West & Chester Council

# Changes to mental health services

Tell us what you think about our ideas



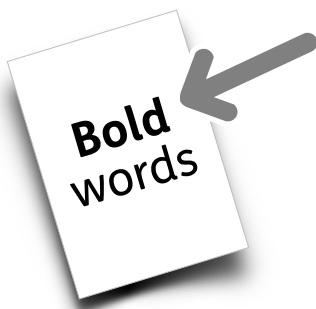
easy  
read



Cheshire West  
and Chester

# Contents

	Page
Introduction	3
Our mental health services	4
Day Services	5
Outreach Services	9
Supported Accommodation	12
Questions about you	17
More information	31



In this Easy Read document, difficult words are in **bold**. We explain what these words mean in the sentence after they have been used.



Some words are [blue and underlined](#). These are links which will go to another website which has more information.

# Introduction



Cheshire West and Chester Council are looking at making some changes to our **mental health services**.

**Mental health services** support people with their emotions and how they are feeling in their mind.



We want to make sure our mental health services are right for the people that use them.



Before we make any changes we want to know what you think about our ideas.



Please tell us what you think by answering the questions in this survey.

We need your answers by Monday, 5 September 2022.

# Our mental health services

We provide mental health services in 3 ways:



1. Day Services - people can go to day centres and take part in organised activities.



2. Outreach Services - this is support for people close to where they live.



3. Supported Accommodation - this is housing for people to live independently, with support.



People are put in touch with these services by a professional, like a social worker or health worker.

# Day Services

## The Day Service



The Day Service gives people who need extra care and support the opportunity to come to a day centre and take part in activities in the day.

This can also be called Day Centre Services.

## Changes to the Day Service

We are suggesting the Day Service will:

**12 weeks**

- Support people with mental health needs to achieve goals that are important to them over 12 weeks.



- Help people find other support from a different organisation if they still need it after the 12 weeks is over.



- Support a small number of people to carry on using the day service for longer than 12 weeks if that is best for them.



- Include a mix of activities that are focused on wellbeing and giving people the skills to look after their own mental health.



- Offer new activities and groups in the current day centres as well as in more places across Cheshire West and Chester.



- Help people to find extra support in their local area.



- Carry on providing lunch.



**Question 1:** How much do you agree or disagree with our suggestions for the Day Service?

Strongly agree

Agree

Neither agree nor disagree

Disagree

Strongly disagree

Don't know





**Question 2:** Please tell us any comments you have about our suggestions for the Day Service. *Think about how any changes may affect you or the person you care for.*

Empty response box for Question 2.



**Question 3:** Please tell us how you think our suggestions for the Day Service could be better, or if you think we have missed anything.

Empty response box for Question 3.



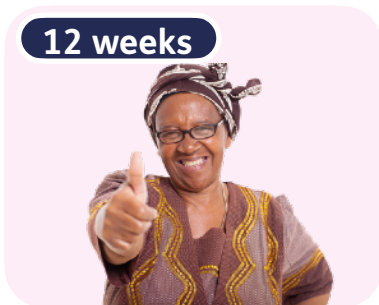
# Outreach Services



Outreach Services provide support for people with mental health needs, close to where they live.

## Changes to Outreach Services

We are suggesting Outreach Services will:



- Work hard to support someone with mental health needs to get better in ways that are important to them in up to 12 weeks.



- Support people with mental health needs to find extra support in their local community.



- Help people with mental health needs find other support provided by a different organisation if they still need it after the 12 weeks is over.



**Question 4:** How much do you agree or disagree with our suggestions for Outreach Services?

Strongly agree

Agree

Neither agree nor disagree

Disagree

Strongly disagree

Don't know



**Question 5:** Please tell us any comments you have about our suggestions for Outreach Services. *Think about how any changes may affect you or the person you care for.*



**Question 6:** Please tell us how you think our suggestions for Outreach Services could be better, or if we have missed anything.

A large, empty rectangular box with a thin black border, intended for the user to provide their response to the question.

# Supported Accommodation



Supported Accommodation provides housing and support for people with mental health needs.

We provide:



- Short term accommodation - this is housing and support that lasts for 12 to 18 months.

After this time, we support people to move on to more independent living.



- Long term accommodation - this is housing and support that lasts for over 18 months.

## Changes to Supported Accommodation:



We are suggesting short term accommodation will:

- Continue to support people with mental health needs, but the support will be more focused on helping people to get better.

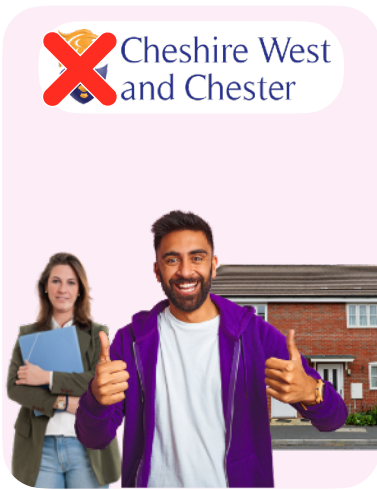


- Help people with mental health needs to be independent.



- Help people with mental health needs find support from other services and in their local community.

We are suggesting long term accommodation will:



- Continue to happen, but support will be provided by another organisation.

People will not have to move where they live, but will get support from a different organisation instead of the council.



**Question 7:** How much do you agree or disagree with our suggestions for Supported Accommodation?

Strongly agree

Agree

Neither agree nor disagree

Disagree

Strongly disagree

Don't know



**Question 8:** Please tell us any comments you have about our suggestions for Supported Accommodation. *Think about how any changes may affect you or the person you care for.*



**Question 9:** Please tell us how you think our suggestions for Supported Accommodation could be better, or if we have missed anything.

A large, empty rectangular box with rounded corners and a thin dark border, intended for the user's response to Question 9.



**Question 10:** If you have any other comments about all of our suggestions please tell us.

A large, empty rectangular box with rounded corners and a thin dark border, intended for the user's response to Question 10.



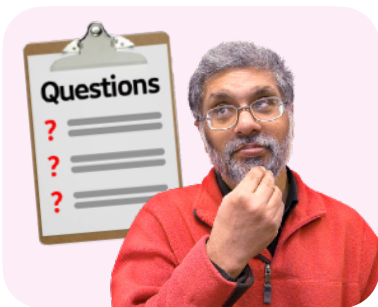
# Questions about you



We would like to ask you some questions about yourself.



This helps us to know that we are hearing from people from different backgrounds.



You do not have to answer these questions if you do not want to.



We follow the law about keeping information safe and private.



**Question 11:** Are you... *(Please tick all the answers that apply)*

- Someone who uses mental health services
- A carer for someone who uses mental health services
- Someone who works for Cheshire West and Chester Council mental health services
- Someone who volunteers for Cheshire West and Chester Council mental health services
- Someone who lives in Cheshire West and Chester
- Someone who works for Cheshire West and Chester Council
- A Cheshire West and Chester Councillor

- A town or parish councillor
- Answering for a business or organisation
- Answering for a volunteer or community group
- Other - please say below

- Prefer not to say



**Question 12:** If you are answering as a business, organisation or group, please tell us its name.

*If you have answered question 12, you do not have to answer the rest of the questions.*



**Question 13:** If you or someone you care for uses mental health services, what support do you get? *Please tick all the answers that apply.*

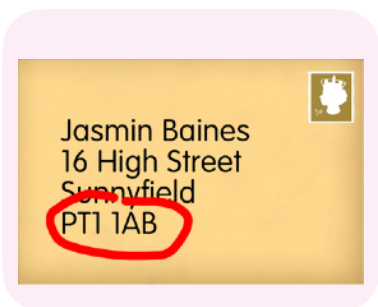
*If you or the person you care for do not use mental health services please go to question 15.*

- The Day Service
- Outreach Services
- Short term supported accommodation
- Long term supported accommodation
- Other - please say below

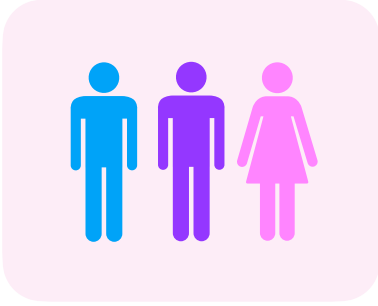


**Question 14:** If you or someone you care for uses mental health services, how long have you been using them?  
*Please tick only 1 answer.*

- Less than 3 months
- 3 to 6 months
- 6 months to 1 year
- 1 to 2 years
- 2 to 5 years
- More than 5 years
- I'm not sure



**Question 15:** What is your postcode?



**Question 16: Are you...?**

Male

Female

Prefer not to say

Prefer to use your own word -  
please describe below



**Question 17: How old are you?**

16 to 24

25 to 34

35 to 44

45 to 54

55 to 64

65 to 74

75 or over

Prefer not to say



**Question 18: Are you...?**

Heterosexual or straight - you are attracted to people of the opposite sex

Bisexual - you are attracted to both men and women

Gay or Lesbian - you are attracted to people who are the same sex as yourself

Prefer not to say

You prefer to use your own word - please say



**Question 19: Do you have a long term health problem or are you disabled?**

Yes

No

Prefer not to say





**Question 20:** If you ticked ‘yes’ to question 19, what is your long term health problem or disability? *Please tick all the answers that apply.*

- Physical disability that means I have difficulty moving around
- Blind or difficulty with eyesight
- Deaf or difficulty with hearing
- Learning disability
- Mental health issue
- Long lasting illness or health condition
- Prefer not to say
- Other - please say below



**Question 21:** How often do you support or provide some care for someone?

- Very little or never
- 1 to 3 hours a week
- 4 to 9 hours a week
- 10 to 19 hours a week
- 20 to 49 hours a week
- 50 or more hours a week
- Prefer not to say
- Other - please say below

## Question 22: What is your religion?



- Buddhist
- Christian
- Hindu
- Jewish
- Muslim
- Sikh
- No religion
- Prefer not to say
- Other - please say below

### Question 23: Are you...?



#### White

English, Welsh, Scottish, Northern Irish or British

Irish

Any other White background - please say below



#### Black or Black British

Caribbean

African

Any other Black background - please say below



### Asian or Asian British

- Indian
- Pakistani
- Bangladeshi
- Chinese
- Any other Asian background - please say below



### Mixed

- White and Black Caribbean
- White and Black African
- White and Asian
- Any other mixed background - please say below



### Other

Arab

Any other ethnic background -  
please say below



### Travelling community

Gypsy or Roma

Irish Traveller

Any other Travelling  
community background -  
please say below

Prefer not to say

Other - please say below

# More information



Thank you for answering these questions.



Please send your answers back in the envelope we have given you to:

- NWA Research  
FREEPOST RTSS-YBKXD-LRGL  
PO Box 309  
Stockton-on-Tees  
TS20 1XP

You don't need a stamp.

If you have any questions please contact Norma Wilburn by:



- Phone call: 0800 316 3630
- Text message: 07811 101585



- Email:  
[norma.wilburn@nwaresearch.co.uk](mailto:norma.wilburn@nwaresearch.co.uk)