



UK Government

Connect to Work

Finding it hard to get into or stay in a job?

If you have a **disability, long-term health condition** or **complex non-health barrier** which has made getting into and staying in employment difficult, **Connect to Work** could help you.

How can Connect to Work support you? ▼

An employment specialist will work with you in:



1. Goal setting

You will be helped to set personalised job goals and make a plan to get you there.



2. Job finding

You will get help searching for jobs, making applications and interview preparation.

Your employment specialist will work directly with employers to find the right job for you.



3. Complete job support

Once in work your employment specialist will support you and your employer in the workplace to make your step into work easier.

If you are already employed and would like help to remain in your job, due to health barriers, **Connect to Work** employment specialists can support you for up to 4-months.

Am I eligible? ▼



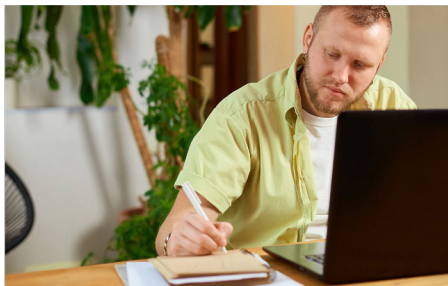
You must be **over 18 in England, (over 16 in Wales)** and entitled to live and work in the UK.



You **do not need to** be on any type of benefit and it's completely voluntary.



You must be **motivated to work**.



TO FIND OUT MORE and begin your journey, contact your Local Authority.



Cheshire West
and Chester



CONNECT TO WORK

Funded by **UK Government**