

# Indices of Deprivation 2025

## Briefing Pack





# About the Indices of Deprivation 2025

## The government's official measure of deprivation

- The English Indices of Deprivation 2025 (IoD25) were published by the Ministry of Housing, Communities and Local Government (MHCLG) in October 2025.
- The indices comprise seven different domains (or types) of deprivation, which are combined and weighted to create the overall Index of Multiple Deprivation (IMD) – the government's official measure of deprivation.

## How areas rank by deprivation across England

- The indices provide a set of relative measures of deprivation for small areas, called Lower layer Super Output Areas (LSOAs), across England. The indices rank each LSOA in England from most deprived to least deprived. There are 33,755 LSOAs in England, with an average population of 1,500.

## Useful resources to support the IoD25:

- [IoD25 statistical release](#) - a national summary (MHCLG)
- [Local Deprivation Explorer](#) - interactive mapping tool with postcode search function (MHCLG)
- [Datasets](#) - Access to the full set of IoD2025 datasets (MHCLG)
- [Local Insights data explorer](#) – interactive tool enabling deeper exploration (Local Insights, OCSI)

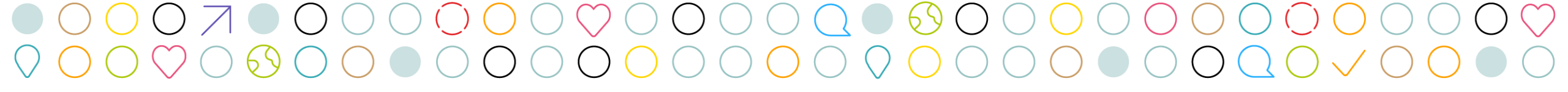




# The domains that make up the Indices of Deprivation (IoD) 2025

These different types of deprivation are weighted and combined to create an overall Index of Multiple Deprivation (IMD)

Domain / deprivation type	Weight	Description
Income	22.5%	Proportion of the population experiencing deprivation relating to low income <ul style="list-style-type: none"> <li>Includes two further indices: <a href="#">Income Deprivation Affecting Children</a> and <a href="#">Income Deprivation Affecting Older People</a></li> </ul>
Employment	22.5%	Proportion of working age population involuntarily excluded from the labour market
Education, skills & training	13.5%	Lack of attainment and skills in the local population
Health & disability	13.5%	Risk of premature death and impairment of life quality through poor physical/mental health
Crime	9.3%	Risk of personal and material victimisation at local level
Barriers to housing & services	9.3%	Physical and financial accessibility of housing and local services
Living environment	9.3%	Quality of both the 'indoor' and 'outdoor' local environment





# How to use to IoD 2025

## Overview

The Indices of Deprivation 2025 (IoD25) is built on the same framework as the 2019 IoD, but with several important changes. The number of indicators has increased from 39 in 2019 to 55 in 2025, and some methods have been updated. Because of these changes, the IoD should be viewed as a snapshot of current deprivation, rather than a precise measure of trends over time.

## Ranking

All 33,755 LSOAs in England are ranked by deprivation.  
Rank 1 = most deprived.  
Rank 33,755 = least deprived.

## Relative, not absolute

Ranks and deciles show whether one area is more deprived than another, but not how much more. For instance, rank 1,000 is not “twice as deprived” as rank 500.

## Deciles

Ranked LSOAs are often divided into 10 equal groups.  
Decile 1 = most deprived 10% of areas.  
Decile 10 = least deprived 10% of areas.

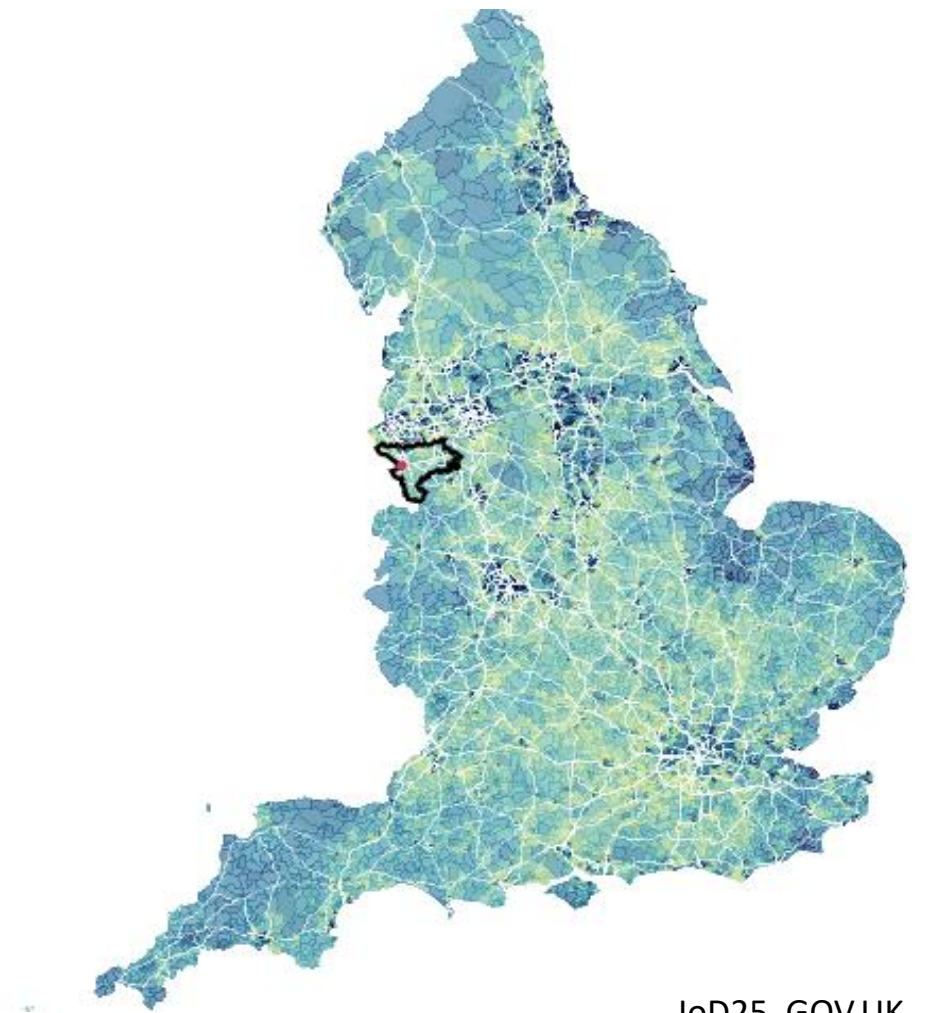
## Comparison over time

The indices measure deprivation at one point in time. Comparisons between 2025 and earlier versions should focus on relative change (e.g. a shift in rank or decile).





# Borough-level view of deprivation in Cheshire West and Chester



IoD25, GOV.UK

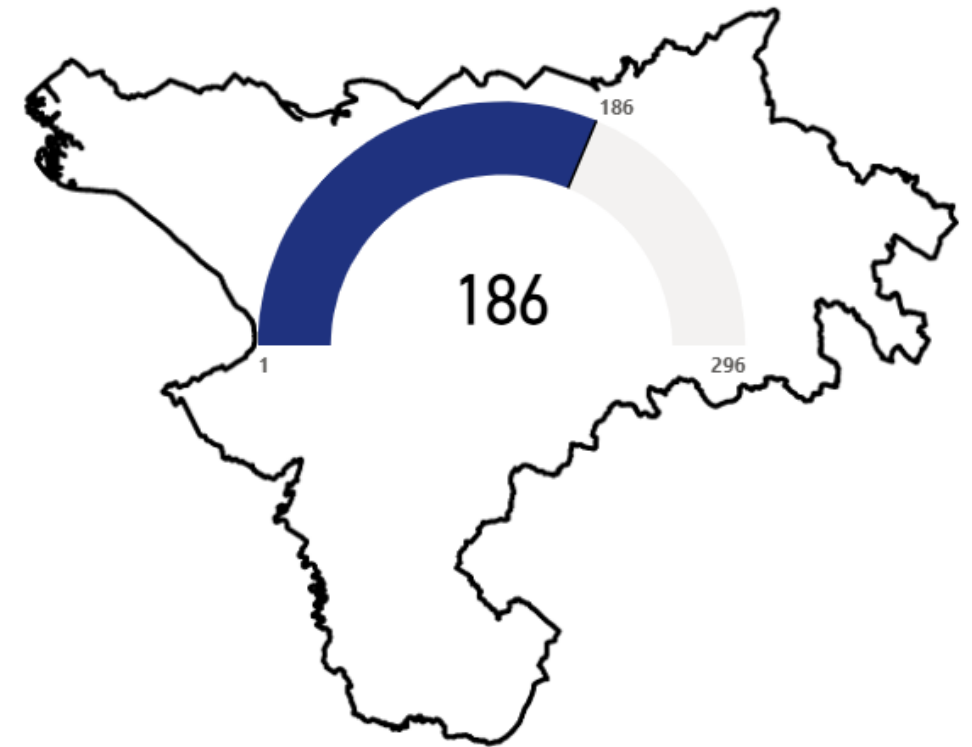


# Cheshire West and Chester compared to England - IMD

## Cheshire West and Chester (CW&C) has a less deprived population profile compared to England.

- The borough ranks 186 out of 296 local authority districts in England in terms of deprivation.
- The most deprived local authority areas are, Blackpool, Manchester and Hastings.
- CW&C has a more deprived rank than the neighbouring areas of Cheshire East and Warrington, which are ranked 231 and 199 respectively.

Calculated using the rank of average rank measure, where 1 is the most deprived and 296 the least deprived local authority district.

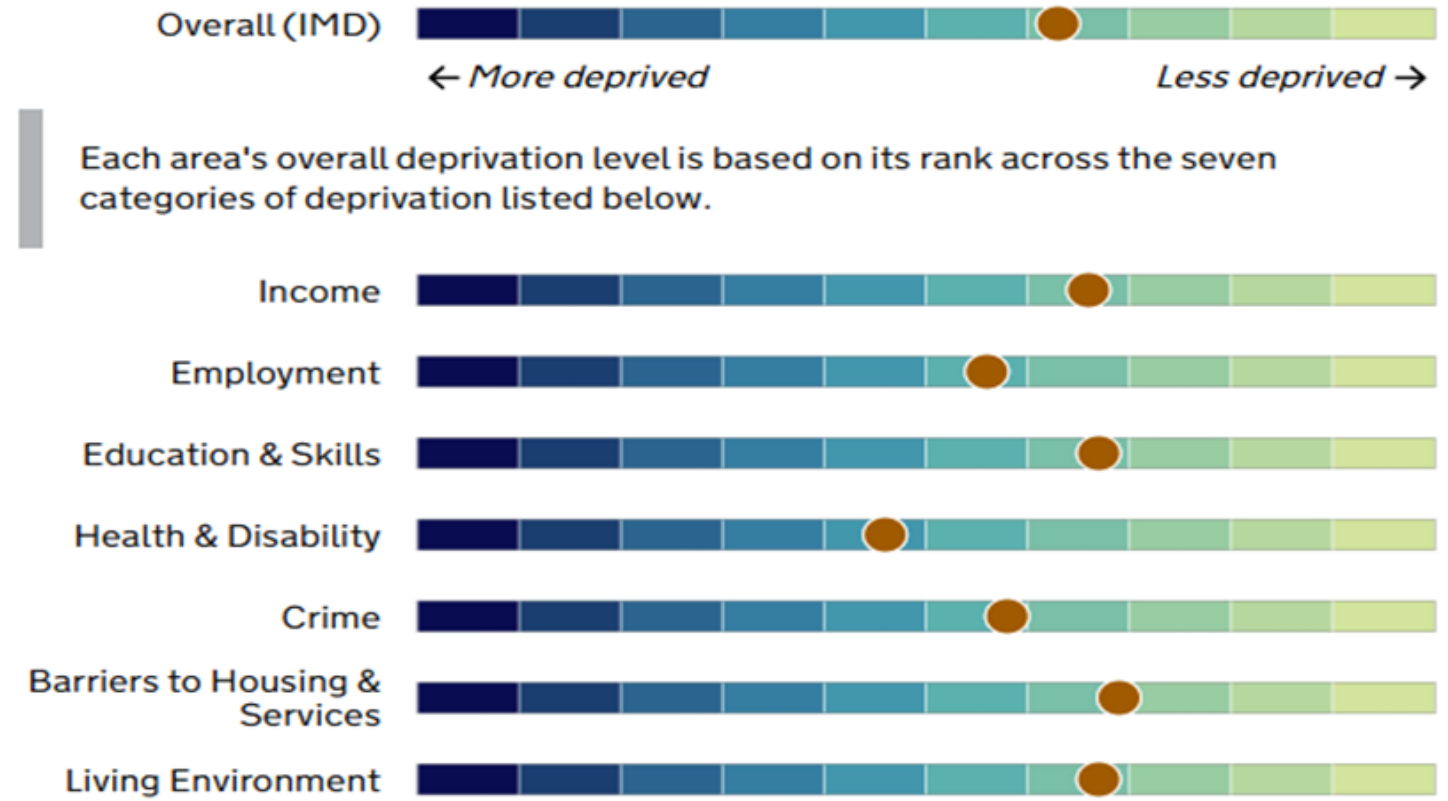


Source: Indices of Deprivation 2025

# Cheshire West and Chester compared to other Local Authority districts in England – overall IMD and IoD domains

Cheshire West and Chester is less deprived than 63% of local authority districts in England using the Overall Index of Multiple Deprivation (IMD).

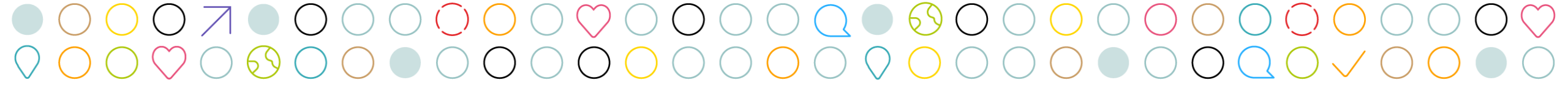
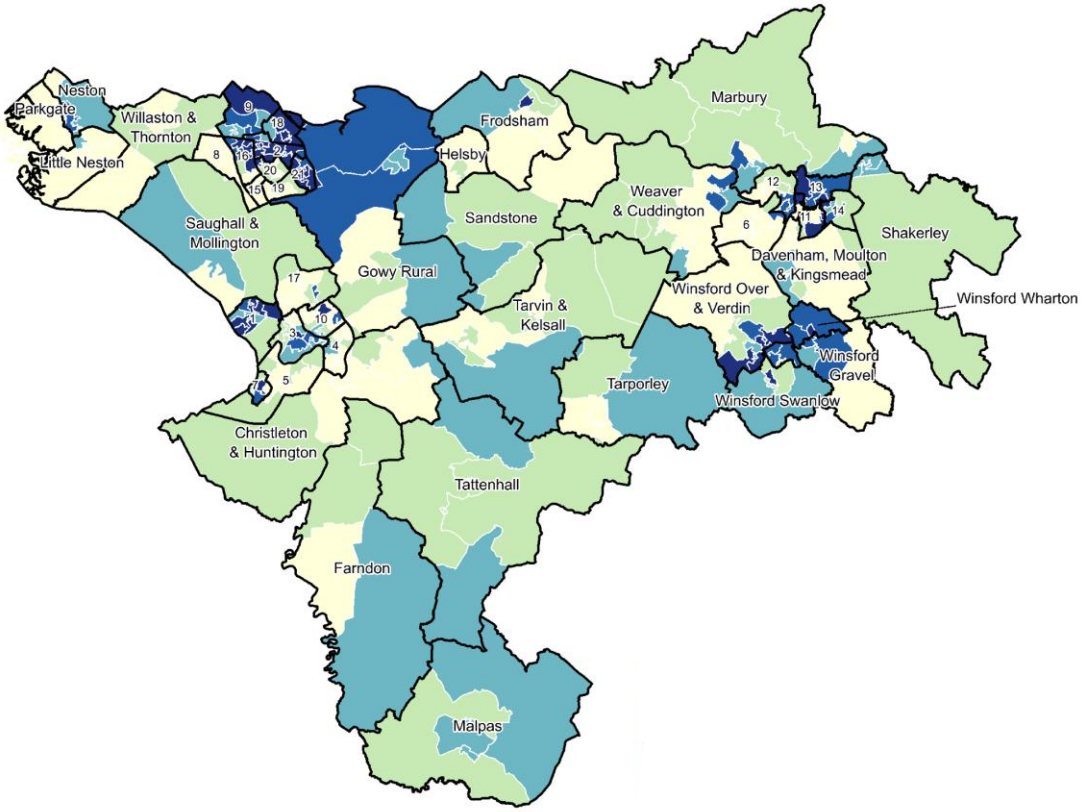
The Borough experiences the greatest level of relative deprivation in the 'Health and Disability' domain, compared to other types of deprivation.



Source: Local Deprivation Explorer (MHCLG) [Overall \(IMD\)](#) | [Local Deprivation Explorer](#)



# Small neighbourhood view of deprivation in Cheshire West and Chester





## Deprivation within Cheshire West and Chester - headlines

- There are 222 lower super output areas (LSOAs) in Cheshire West and Chester, these are often referred to as neighbourhoods in the IoD reports.
- There are pockets of deprivation across the Borough, with 29,500 residents living in 19 neighbourhoods (LSOAs) that rank in the 10% most deprived neighbourhoods in England, based on the IMD.
- Two of these neighbourhoods rank in the 1% most deprived areas in England. These neighbourhoods are in Lache and Westminster wards.
- The highest levels of deprivation, based on the IMD, are found in primarily urban parts of the Borough.

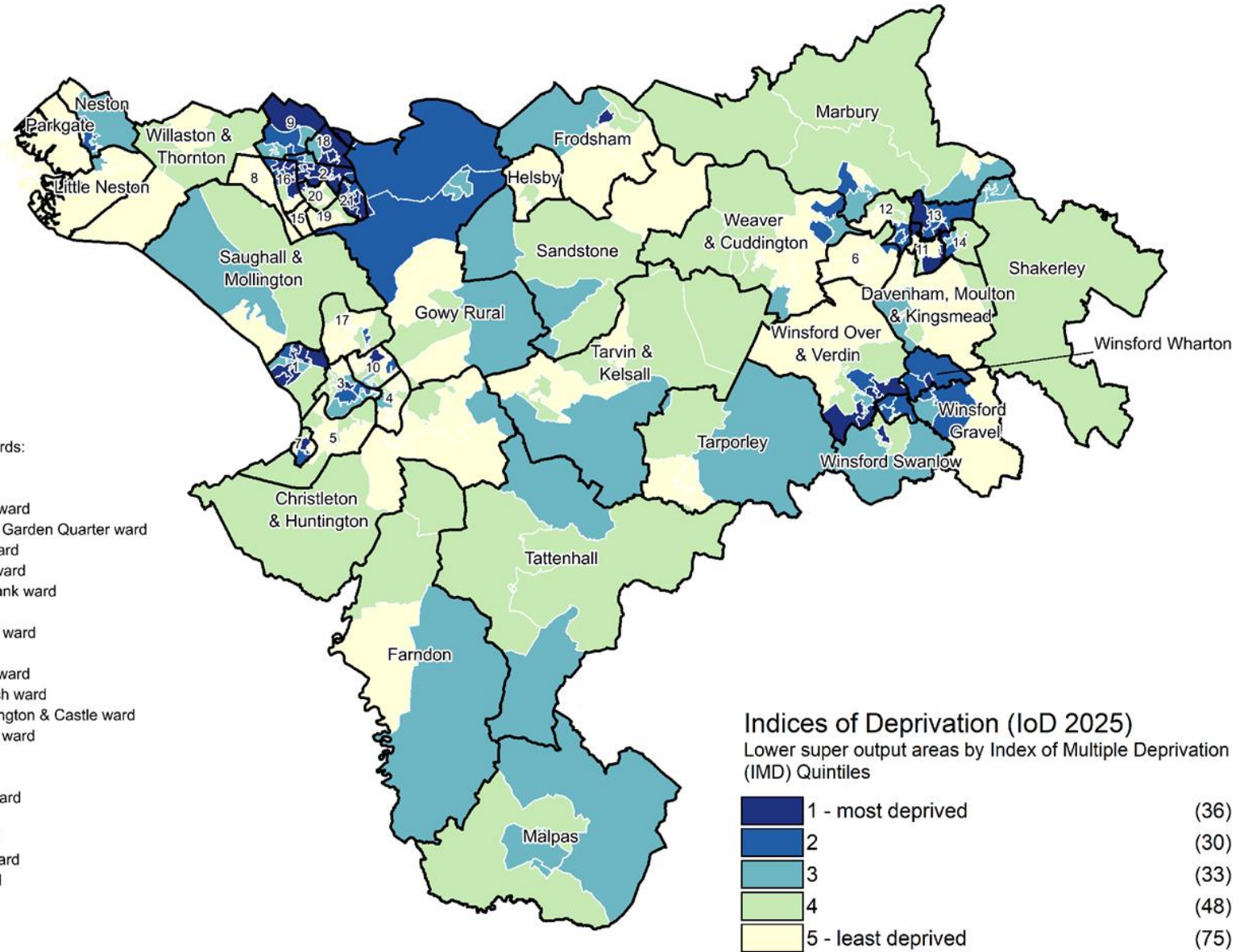


# IMD quintiles

Quintiles divide the rankings into five equal parts.

**36 (16%) of CW&C LSOAs rank in quintile 1, the 20% most deprived LSOAs in England.**

The highest levels of deprivation are found in the urban areas of CW&C, primarily within the City of Chester, and the towns of Ellesmere Port, Northwich and Winsford.



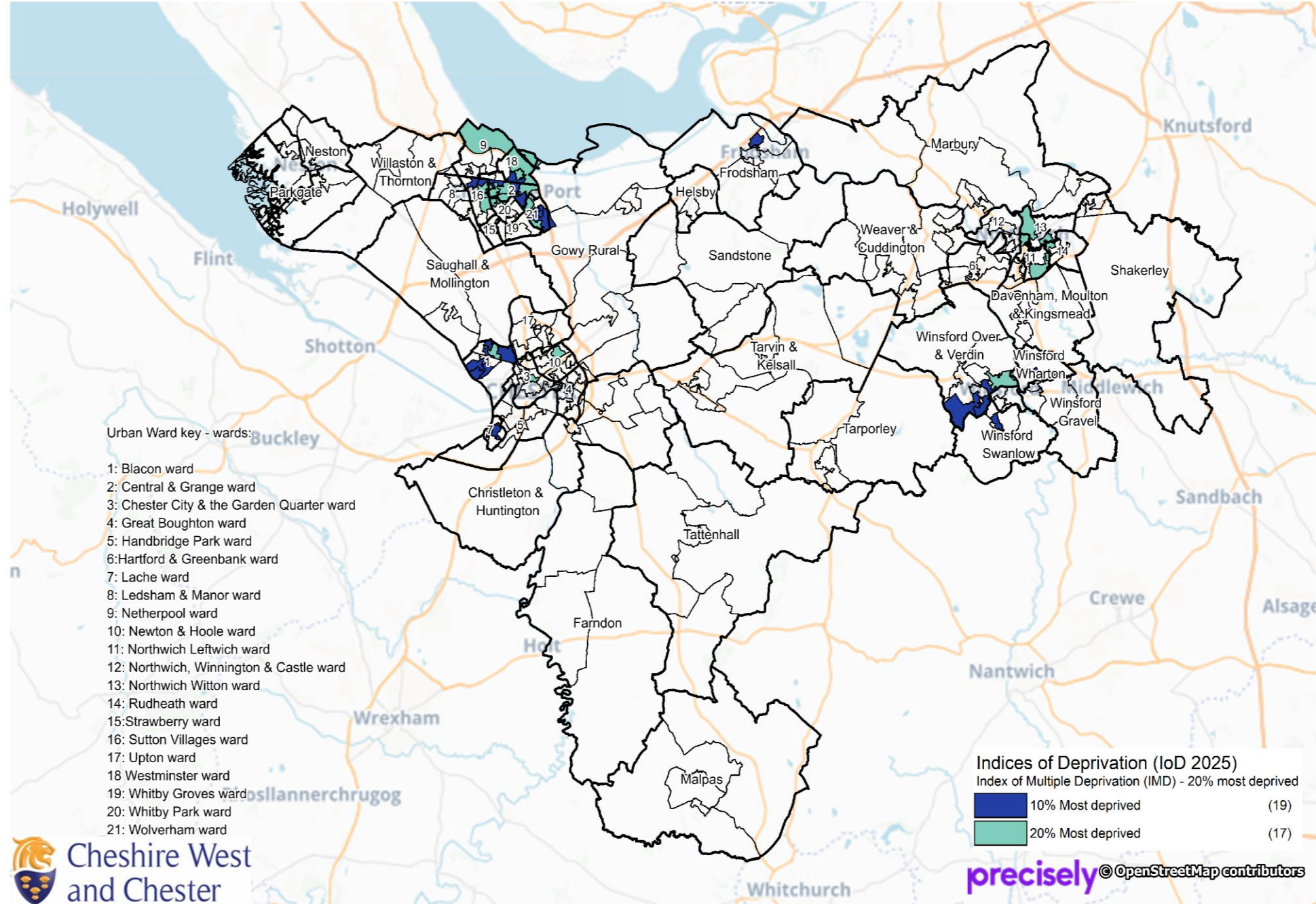
**Indices of Deprivation 2025 (IoD25): Cheshire West and Chester by lower super output area by Index of Multiple Deprivation (IMD) quintile**

# IMD deciles 1 & 2

Deciles divide the rankings into 10 equal parts.

**19 (8.6%) of CW&C LSOAs rank in decile 1, the 10% most deprived LSOAs in England.**

Again, the highest levels of deprivation are found in the urban areas, primarily within the City of Chester, and the towns of Ellesmere Port, Northwich and Winsford.



**Indices of Deprivation 2025 (IoD25): Lower super output areas in Cheshire West and Chester ranked in the 20% most deprived nationally based on Index of Multiple Deprivation (IMD)**

Cheshire West and Chester Council. Contains Ordnance Survey data © Crown copyright and database right 2015. Licence No 100049046. Source: Ministry of housing, Communities and Local Government © Crown copyright 2019.

# Most deprived neighbourhoods in CW&C based on IMD25 rank

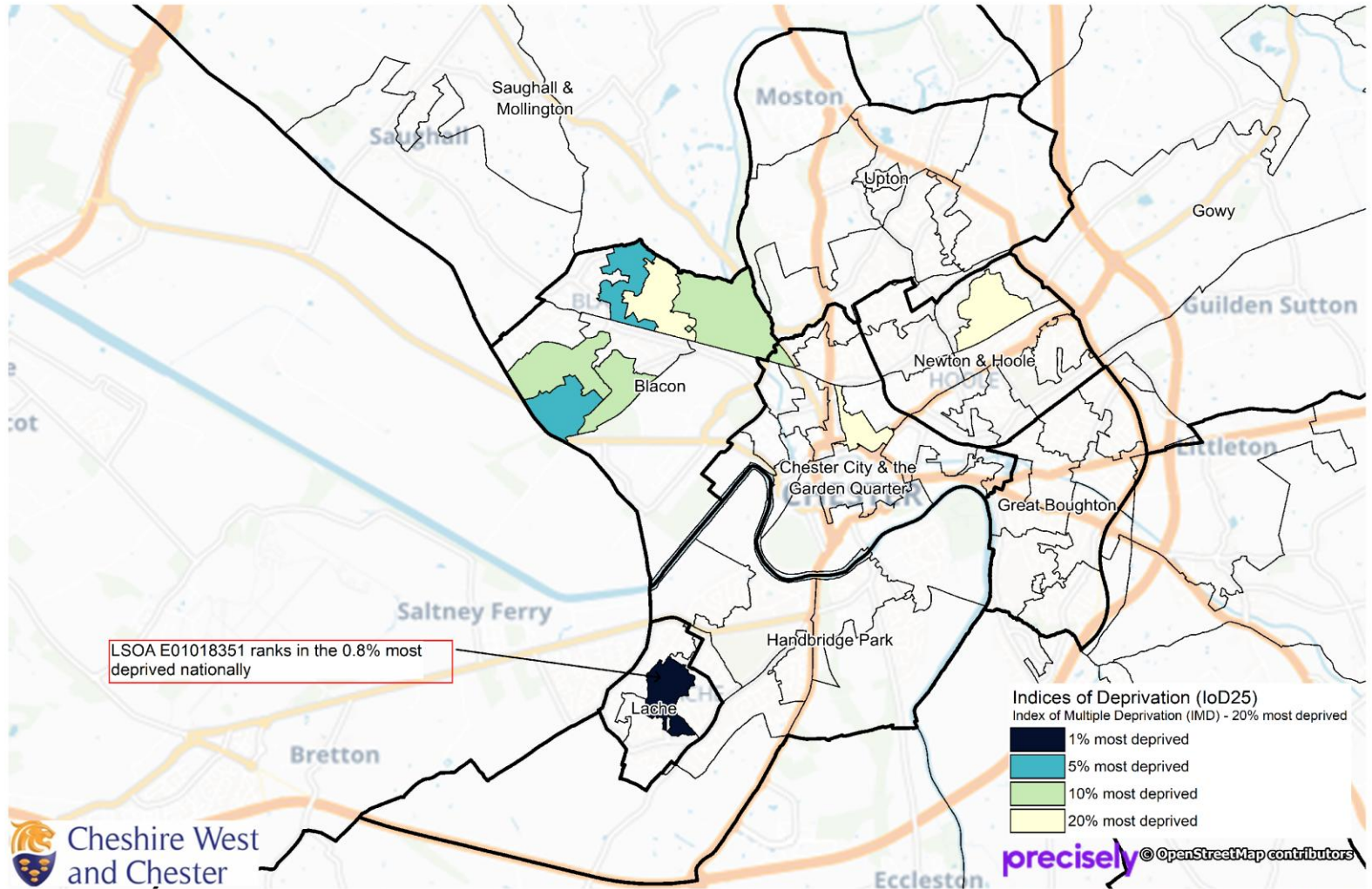
- **The most deprived area in Cheshire West and Chester (CW&C) is in Lache ward, ranked 267 out of 33,755 areas (LSOAs) in England - placing it among the 1% most deprived LSOAs nationally.**
- Three of the five most deprived LSOAs in CW&C are in Winsford wards.
- Three of the ten most deprived LSOAs in CW&C are in Blacon ward and three are Ellesmere Port wards.

Ten most deprived lower super output areas (LSOAs) in Cheshire West and Chester according to the Index of Multiple Deprivation (IMD) 2025

CW&C Rank	LSOA code (2021)	LSOA name (2021)	Ward name	IMD Rank (1 is most deprived)	IMD Decile	IMD Percentile
1	E01018351	Cheshire West and Chester 044A	Lache	267	1	1
2	E01035368	Cheshire West and Chester 007I	Westminster	312	1	1
3	E01018748	Cheshire West and Chester 035C	Winsford Wharton	641	1	2
4	E01018740	Cheshire West and Chester 042C	Winsford Swanlow	692	1	3
5	E01018738	Cheshire West and Chester 040B	Winsford Over and Verdin	833	1	3
6	E01018524	Cheshire West and Chester 008B	Central and Grange / Sutton Villages	1223	1	4
7	E01018317	Cheshire West and Chester 031E	Blacon	1418	1	5
8	E01018311	Cheshire West and Chester 029C	Blacon	1533	1	5
9	E01018550	Cheshire West and Chester 011B	Wolverham	1801	1	6
10	E01018316	Cheshire West and Chester 031D	Blacon	2166	1	7

Source: Indices of Deprivation 2025

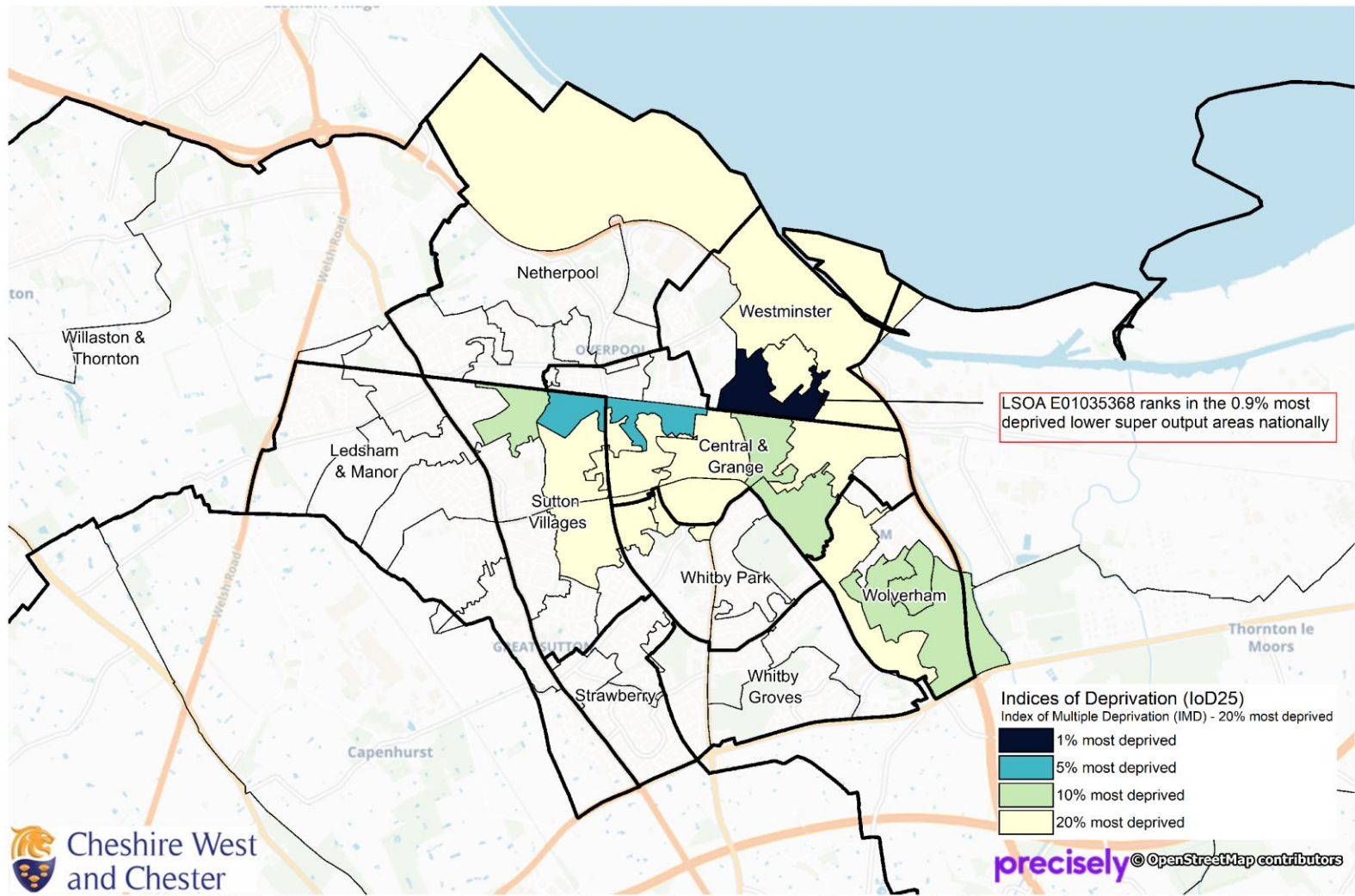
# Breakdown by area: Chester



- **Lache ward** has one LSOA in the top **1% most deprived in England**.
- **Nine LSOAs** in the Chester area are in the 20% most deprived neighbourhoods.
- **12,300 residents** in the Chester area live in the 20% most deprived neighbourhoods.



# Breakdown by area: Ellesmere Port



- **Westminster Ward** has one LSOA in the top **1% most deprived in England**.
- **17 LSOAs** in the Ellesmere Port area are in the 20% most deprived neighbourhoods.
- **25,600 residents** in the Ellesmere Port area live in the 20% most deprived neighbourhoods.



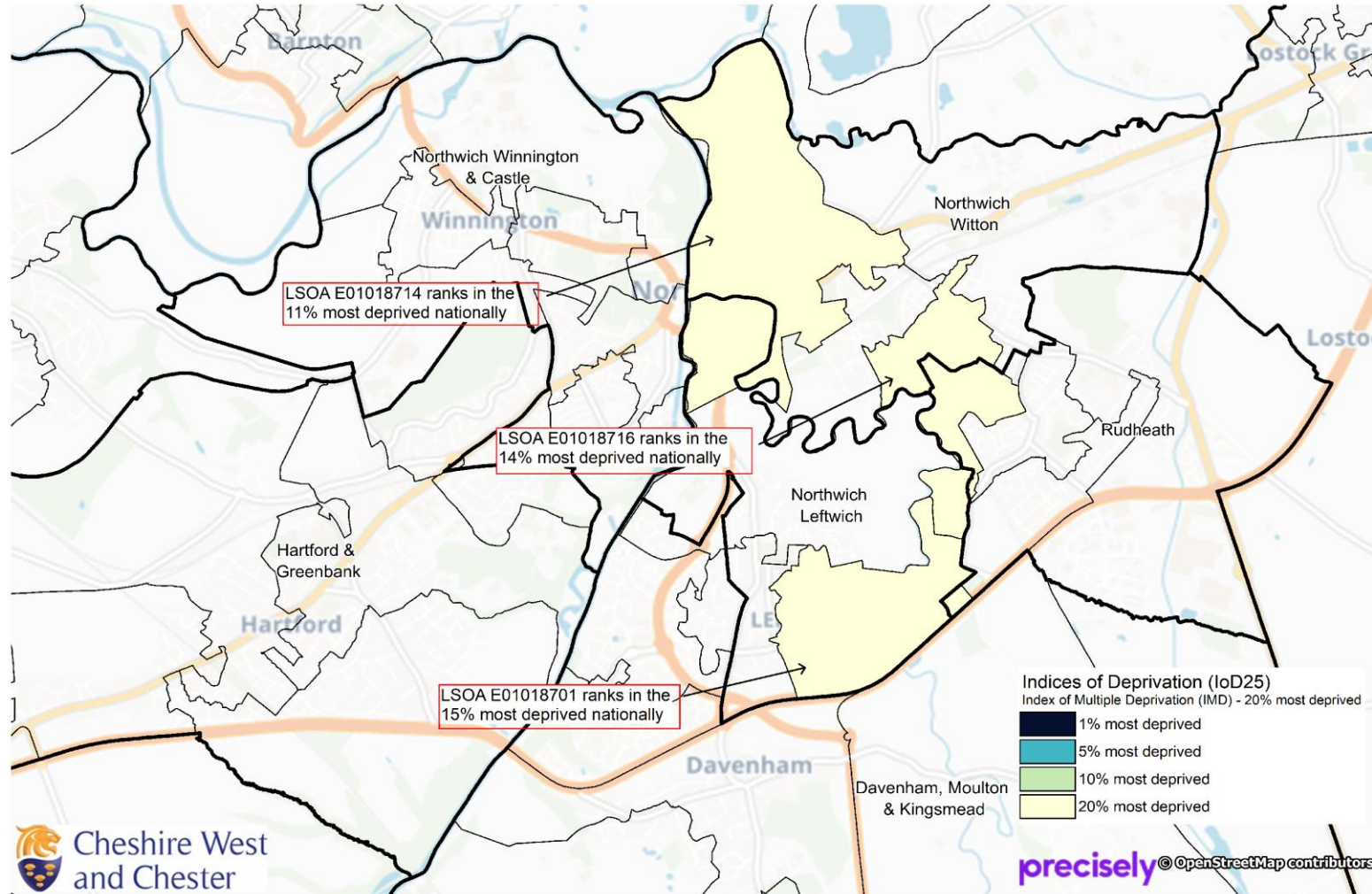
Indices of Deprivation 2025 (IoD25): Lower super output areas in Ellesmere Port wards ranked in the 20% most deprived nationally based on Index of Multiple Deprivation (IMD)

Cheshire West and Chester Council. Contains Ordnance Survey data © Crown copyright and database right 2015. Licence No 100049046. Source: Ministry of housing, Communities and Local Government © Crown copyright 2019.

Source: Indices of Deprivation 2025, ONS Mid year population 2024



# Breakdown by area: Northwich



- **Northwich Witton** has one LSOA in the top **11% most deprived in England**.
- **Three LSOAs** in the Northwich area are in the 20% most deprived neighbourhoods.
- **5,000 residents** in the Northwich area live in the 20% most deprived neighbourhoods.

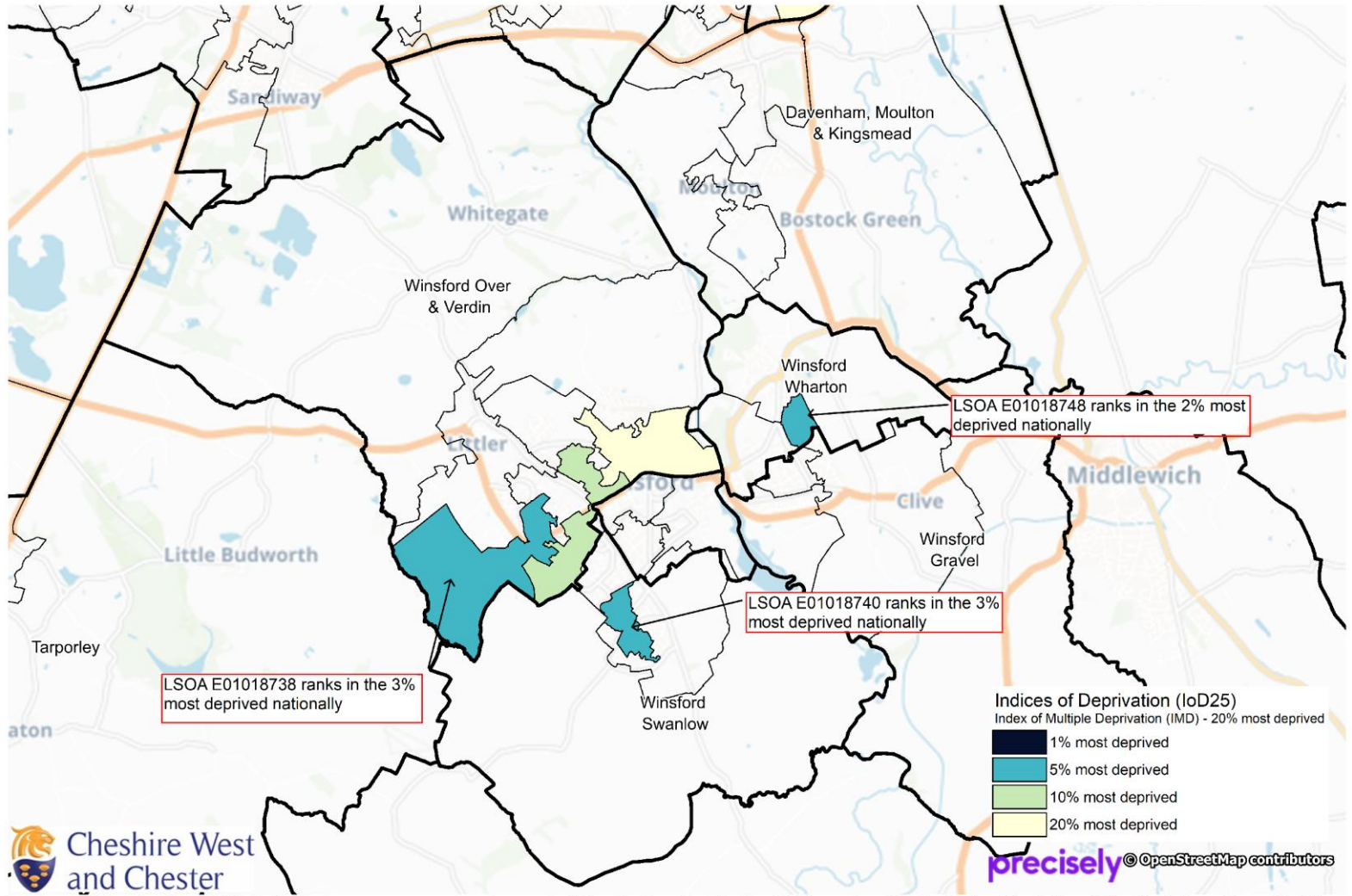
Source: Indices of Deprivation 2025, ONS Mid year population 2024

Indices of Deprivation 2025 (IoD25): Lower super output areas in Northwich ranked in the 20% most deprived nationally based on Index of Multiple Deprivation (IMD)

Cheshire West and Chester Council. Contains Ordnance Survey data © Crown copyright and database right 2015. Licence No 100049046. Source: Ministry of housing, Communities and Local Government © Crown copyright 2019.



# Breakdown by area: Winsford



- **Winsford Wharton Ward** has one LSOA in the top **2% most deprived in England**.
- **Six LSOAs** in the Winsford area are in the 20% most deprived neighbourhoods.
- **10,900 residents** in the Winsford area live in the 20% most deprived neighbourhoods.

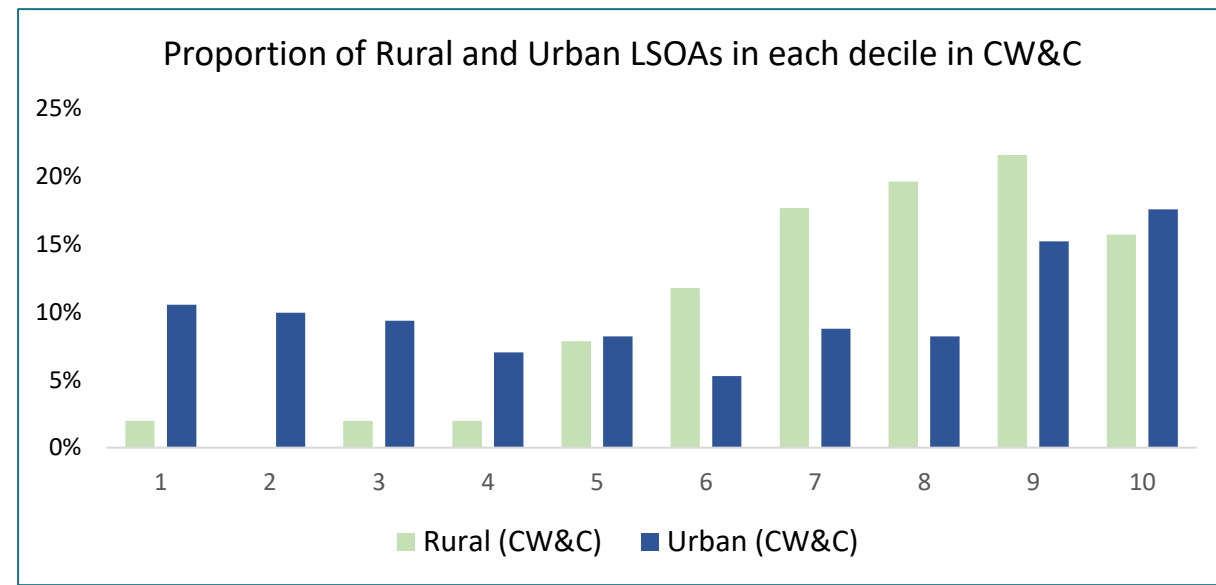
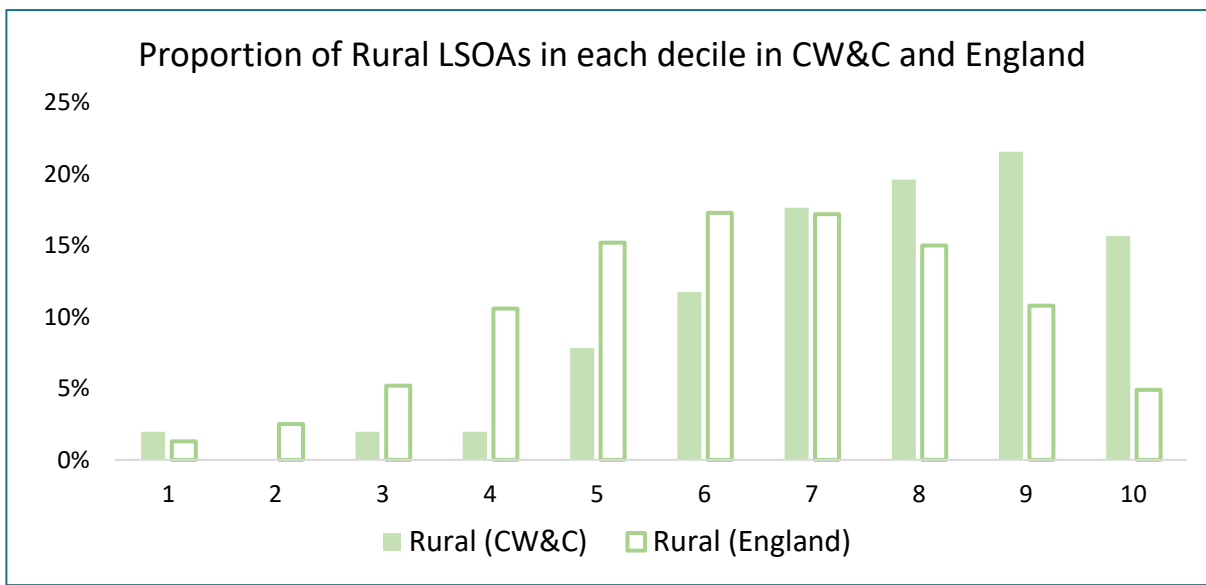
Source: Indices of Deprivation 2025, ONS Mid year population 2024



# Rural neighbourhoods – IMD deciles

- CW&C has a higher proportion of rural areas (23% of LSOAs) than England (17%).
- Rural LSOAs in the borough are generally less deprived than rural areas nationally.

- A smaller proportion of rural areas are deprived compared to urban areas, both locally and nationally.
- One rural LSOA in Frodsham falls within the most deprived 10% areas in England (decile 1). This area is home to 1.4% (1,300) of the rural population.



Note: Calculated using the ONS Urban/Rural classification, RUC21.



# Cheshire West and Chester - domains

More neighbourhoods in CW&C are affected by either education deprivation or health and disability deprivation than other types of deprivation.

- Education: 13 neighbourhoods (6%) are amongst the 5% most deprived in England.
- Health: 50 neighbourhoods in CW&C (23% of LSOAs) are amongst the 20% most deprived areas in England for the health domain, with a population of 79,200.

Number of neighbourhoods (LSOAs) in Cheshire West and Chester that fall into the 1%, 5%, 10% and 20% most deprived neighbourhoods in England by type of deprivation (domain)

	IMD	Income	Employment	Education, skills & training	Health & disability	Crime	Barriers to housing and services	Living environment
LSOAs in most deprived 1%	2	1	2	2	1	0	0	0
LSOAs in most deprived 5%	8	9	11	<b>13</b>	7	8	4	1
LSOAs in most deprived 10%	19	13	22	<b>25</b>	<b>23</b>	22	9	9
LSOAs in most deprived 20%	36	33	42	44	<b>50</b>	39	24	24

Population in the most deprived 20%	56,600	53,000	67,400	70,100	79,200	63,400	47,600	43,200
-------------------------------------	--------	--------	--------	--------	--------	--------	--------	--------

Source: Indices of Deprivation 2025, ONS Mid year population 2024

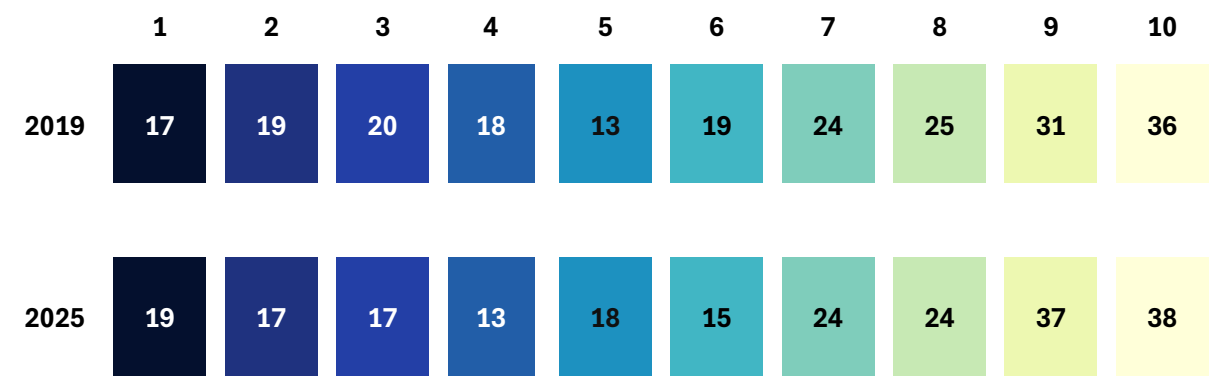




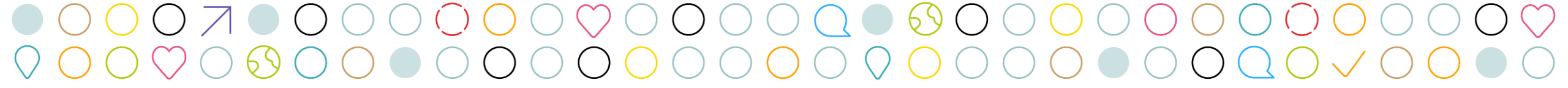
# IMD 2025 – change in CW&C since IMD 2019

- In 2025, **19 (8.6%) of our LSOAs rank in decile 1**, the 10% most deprived LSOAs in England. This is an increase from 17 LSOAs ranked in the most deprived decile in the IMD 2019.
- A reduction of LSOAs in decile 2 means that the number and proportion of LSOAs in quintile 1 remains the same as in IMD 2019, **36 (16%) of CW&C LSOAs rank in the 20% most deprived LSOAs in England.**
- The number of LSOAs ranked amongst the less deprived in England has increased.

Number of lower super output areas (LSOAs) in each Index of Multiple Deprivation (IMD) decile



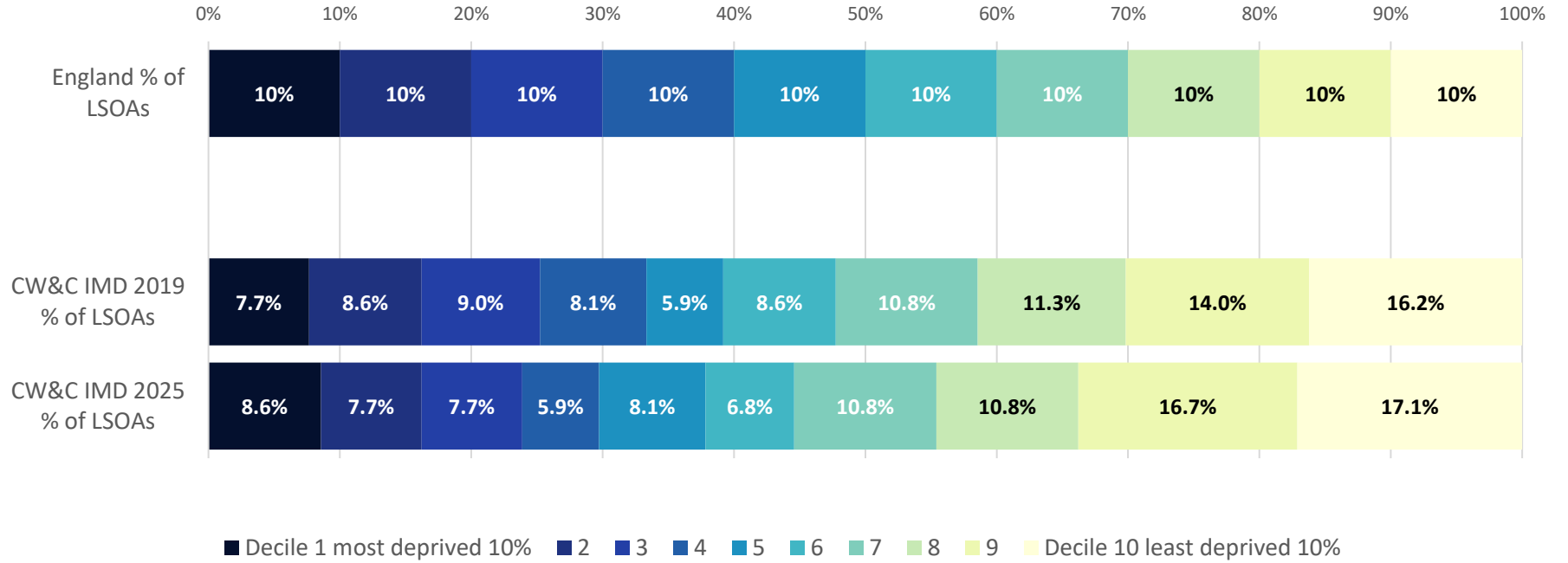
Source: Indices of Deprivation 2025



# IMD 2025 - change since IMD 2019

Proportion of Cheshire West and Chester lower super output areas in each Index of Multiple Deprivation (IMD) decile in 2019 and 2025, compared to England

CW&C has a smaller proportion of LSOAs in the 10% and 20% most deprived deciles compared to England and a higher proportion of LSOAs in the least deprived deciles.



Source: Indices of Deprivation 2025