

Labour Market Overview Ellesmere Port

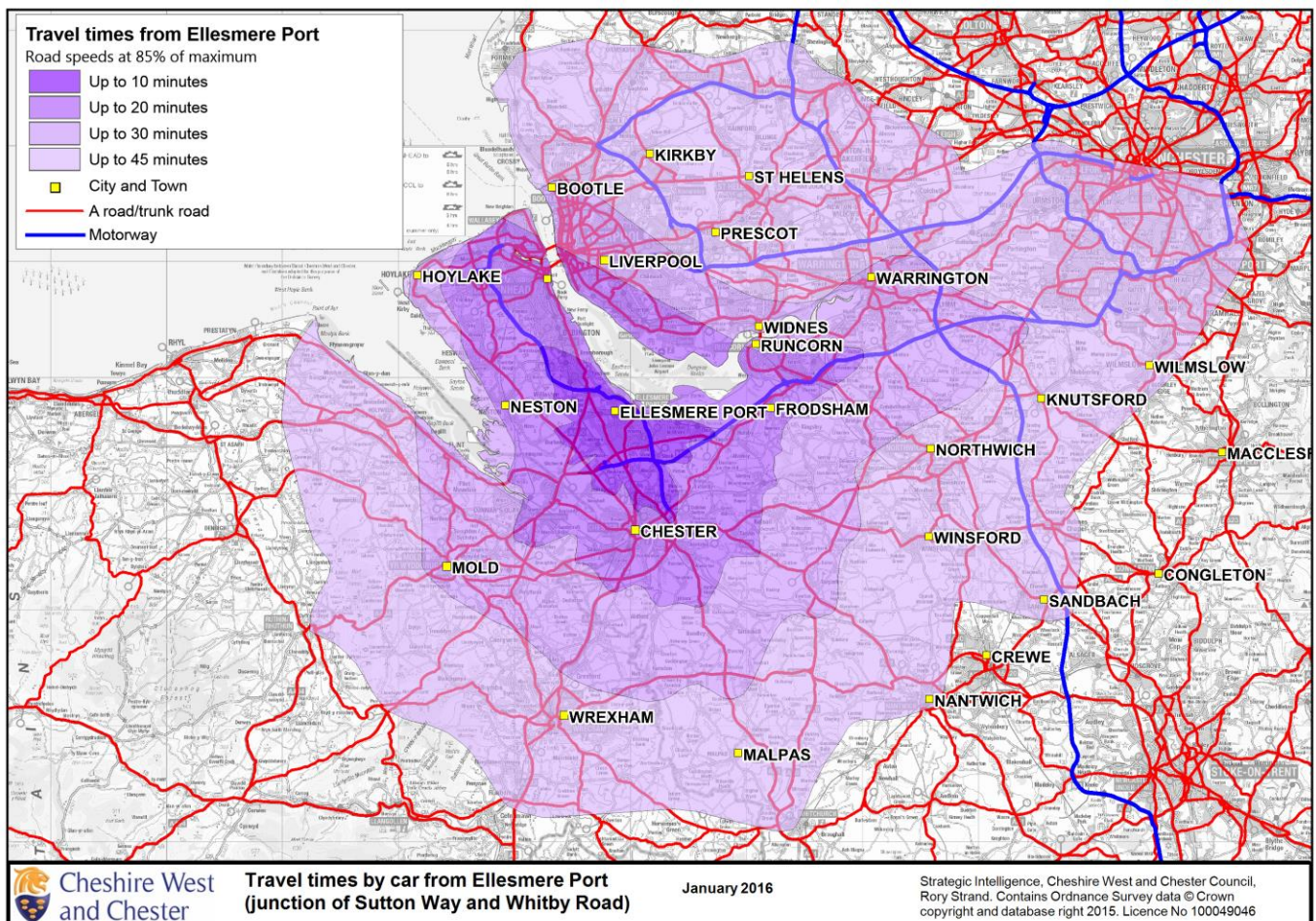
January 2020

Synopsis

The following is a labour market review for Ellesmere Port and the surrounding areas. Its aim is to provide an understanding of the size and quality of the workforce within a reasonable commuting distance of Ellesmere Port (Sutton Way and Whitby Road junction).

Commuting distances from Ellesmere Port

The map below shows the car commuting times of 10, 20, 30 and 45 minutes from Ellesmere Port at the junction of Sutton Way and Whitby Road. Travel times are based on 85% of road speed limits to account for the fact that traffic can travel slower than the actual speed limits



Map 1: Car commute times from Ellesmere Port.



Table 1: Population and Worker Availability

Population and Worker Availability				
Car commute from Ellesmere Port (Sutton Way and Whitby Road junction)	Total Population*	16-74 Population*	16-24 Population*	Total Economically Active**
Up to 10 minutes	98,947	70,724	9,357	50,140
Up to 20 minutes	730,415	537,879	89,668	349,162
Up to 30 minutes	1,387,965	1,020,925	165,998	666,265
Up to 45 minutes	3,599,755	2,635,741	423,979	1,741,728

* population information is from 2018 mid-year population estimates

** Economically active from Census 2011 (KS601EW) Contains public sector information licensed under the Open Government Licence v3.0

- Within a 30 minutes commute there are over 660,000 economically active people potentially available for employment.

Table 2: Household access to cars or vans

Access to personal transport			
Car commute from Ellesmere Port (Sutton Way and Whitby Road junction)	Total Households	Households with 1 or more Car or Van	Percentage of households with 1 or more Car or Van
Up to 10 minutes	41,703	33,274	80%
Up to 20 minutes	310,144	215,557	70%
Up to 30 minutes	585,013	400,637	68%
Up to 45 minutes	1,479,801	1,047,728	71%

Source: Census 2011 (KS404EW) Contains public sector information licensed under the Open Government Licence v3.0

- Around 70% of households have access to at least one motor vehicle across the commuting intervals.

Table 3: Workforce availability by occupation type.

Occupation Type	Occupation Type			
	Car commute from Ellesmere Port (Sutton Way and Whitby Road junction)			
	Up to 10 minutes	Up to 20 minutes	Up to 30 minutes	Up to 45 minutes
1. Managers, Directors and Senior Officials	4,376	29,236	55,821	152,287
2. Professional Occupations	6,838	57,059	102,561	276,859
3. Associate Professional and Technical Occupations	5,450	38,314	70,675	190,598
4. Administrative and Secretarial Occupations	5,452	36,998	72,848	190,022
5. Skilled Trades Occupations	5,382	31,962	62,361	161,756
6. Caring, Leisure and Other Service Occupations	4,652	31,490	59,939	155,281
7. Sales and Customer Service Occupations	4,883	30,654	59,364	154,350
8. Process, Plant and Machine Operatives	4,481	24,732	48,188	123,815
9. Elementary Occupations	5,292	37,063	72,326	184,962

Source: Census 2011 (KS608EW) Contains public sector information licensed under the Open Government Licence v3.0



Within a 30 minute commute of the Ellesmere Port:

- Over 150,000 people are employed in professional and managerial roles.
- Over 140,000 people are employed within administrative and associate professional/technical roles.

Table 4: Highest level of qualification.

Highest level of Qualification							
Car commute from Ellesmere Port (Sutton Way and Whitby Road junction)	Qualification level						
	No Qualifications	Level 1	Level 2	Apprenticeship	Level 3	Level 4 and above	Other Qualifications
Up to 10 minutes	18,459	12,143	13,751	3,944	10,320	18,419	3,061
Up to 20 minutes	136,351	76,930	91,626	21,277	80,783	149,953	23,451
Up to 30 minutes	273,564	149,944	175,433	39,827	149,130	270,340	44,510
Up to 45 minutes	684,889	380,590	441,866	99,771	376,547	720,908	121,731

Source: Census 2011 (KS501EW) Contains public sector information licensed under the Open Government Licence v3.0

Within a 30 minute commute of the Ellesmere Port:

- There are over 270,000 people with level 4 and above qualifications; Level 4 and above represents those with a degree qualification or equivalent and up.
- There are over 630,000 people with Level 2 (equivalent of 5+ GCSE's) qualifications and above, including those who have completed apprenticeships.

Table 5: People Claiming Unemployment Benefits

People claiming Unemployment Benefits (October 2019)						
Car commute from Ellesmere Port (Sutton Way and Whitby Road junction)	All: Aged 16+			Aged 16-24		
	Universal Credit 'Searching for Work'	JSA	Total Claimant Count	Universal Credit 'Searching for Work'	JSA	Total Claimant Count
Up to 10 minutes	1,515	210	1,725	310	-	345
Up to 20 minutes	13,930	1,990	15,985	2,800	55	3,185
Up to 30 minutes	27,915	4,370	32,405	5,485	90	6,175
Up to 45 minutes	68,715	9,890	78,685	13,305	130	15,095

Source: ONS Crown Copyright Reserved [from Nomis on 14 January 2020], Department for Workplace and Pensions

Numbers are rounded to the nearest 5 and are subject to independent rounding. Therefore, the sum of independent components may not sum precisely to the total.

Note: The claimant count measures the number of people claiming JSA and those placed in the Universal Credit (UC) 'searching for work category'. As UC is rolled out across the country and more people are included in the 'searching for work' category, the count is set to rise irrespective of economic conditions. (See Glossary for further details.)

Within a 30 minute commute from Ellesmere Port:

- There are over 32,000 people claiming Job Seekers Allowance or Universal Credit (and have been placed in the 'Searching for Work' category).
- Around 19% of those claimants are aged 16-24.



Table 6: Employment by Industry (2018)

Employment in Broad Industrial Sectors (BRES 2018)				
Car commute from Ellesmere Port (Sutton Way and Whitby Road junction)	Up to 10 minutes	Up to 20 minutes	Up to 30 minutes	Up to 45 minutes
1 : Agriculture, forestry & fishing (A)*	50	200	400	1,200
2 : Mining, quarrying & utilities (B,D and E)	500	3,450	7,350	26,700
3 : Manufacturing (C)	6,000	40,800	66,500	149,000
4 : Construction (F)	1,650	14,550	26,100	78,550
5 : Motor trades (Part G)	1,050	6,150	11,150	29,250
6 : Wholesale (Part G)	1,800	12,600	22,600	73,050
7 : Retail (Part G)	5,600	45,650	72,050	181,050
8 : Transport & storage (inc postal) (H)	1,150	20,150	35,200	103,800
9 : Accommodation & food services (I)	2,750	32,150	49,800	127,700
10 : Information & communication (J)	550	10,450	15,900	57,950
11 : Financial & insurance (K)	250	8,850	18,600	58,400
12 : Property (L)	300	7,950	12,350	35,300
13 : Professional, scientific & technical (M)	4,150	38,150	66,550	178,650
14 : Business administration & support services (N)	3,650	36,700	62,500	185,950
15 : Public administration & defence (O)	1,100	23,950	40,200	80,100
16 : Education (P)	2,850	32,750	56,150	150,600
17 : Health (Q)	5,000	53,750	95,900	246,850
18 : Arts, entertainment, recreation & other services (R,S,T and U)	1,850	18,750	33,800	81,450
Total	40,200	406,950	693,000	1,845,500
Source: BRES, ONS Crown Copyright Reserved [from Nomis on 14 January 2020]				
* These figures exclude farm agriculture (SIC subclass 01000).				
Numbers are rounded to the nearest 50				
Note: BRES estimates should be viewed with caution. (See Glossary for further details.)				

Within a 30 minute commute from Ellesmere Port:

- There is estimated to be over 693,000 jobs.
- The Health industry accounts for the greatest number of jobs (95,900). The Professional, Scientific & Technical, Retail and Manufacturing industries also account for a large number of employee jobs.



Conclusions from commuting information:

- Within 30 minutes' drive there are over 400,000 people with Level 3 qualifications and above (level 3 is equivalent to two or more A levels, or a BTEC diploma or above)
- Around 70% of households have access to at least one vehicle
- Professional occupations are the highest contributor to employment regardless of commuting distance, followed by associate professional and technical out of all of the occupation types.
- Managers, directors and senior officials account for around 10% of all occupation types across the commuting area.
- There are around 10,000 JSA claimants who are available for and actively seeking employment, and over 69,000 Universal Credit Searching for Work claimants that must search and prepare for work (or more work) within the 45 minute commuting area.
- Jobs in the Health industry account for 14% of overall jobs within the 45 minute area.

There are well over 700,000 well trained (level 4 +) and economically active people across the range of commuting distances from Ellesmere Port.

Cheshire West and Chester workforce statistics:

- There were around 206,500 people of working age (16-64) living in Cheshire West and Chester.
- Around a quarter (52,800) of people of working age (16-64) who lived in Cheshire West and Chester travelled outside of the Borough to work; over 51,000 who live outside the borough travel in to Cheshire West and Chester to work (Census 2011).
- 86% (180,400) of people of working age were in very good or good health; this is higher than the North West (83%) and similar to England and Wales (85%).
- 42% of residents aged 16+ were educated to at least level 3 qualifications; higher than the North West (37%) and England and Wales (40%).
- The percentage of residents (aged 16 to 74) employed in higher managerial, administrative and professional occupations increased from 10% in 2001 to 12% in 2011. The percentage employed in lower managerial, administrative and professional occupations increased from 19% in 2001 to 22% in 2011.
- The percentage of employees employed in professional or associate professional and technical occupations has increased from 26% in 2001 to 30% in 2011.

Looking ahead:

The population in Cheshire West and Chester is forecast to increase by 10% between 2015 and 2035 reaching 366,700. This reflects an additional 22,000 new dwellings planned for 2010 to 2030 in the Local Plan.

The labour supply is forecast to increase by from around 173,200 in 2015 to around 180,200 in 2035 within the Cheshire West and Chester Local Authority area.



Methodology:

This document was designed to provide an overview of the available workforce in Cheshire West and Chester and the surrounding areas. It provides key statistics and forecasts derived from detailed analysis of multiple data sets, including 2011 Census, NOMIS and our Cheshire West and Chester population forecasting.

Car commuting times were identified as the key factor for worker availability (train travel only represents 2.8% of daily commuters – Census 2011), and as such were key to understanding the potential labour pool. Commuting times of 10, 20, 30 and 45 minutes were chosen to represent reasonable commuting times. These commuting intervals (isochrones) were calculated based on 85% of road speed limits, due to the fact that traffic can travel slower than the maximum speed limit. The intersection of Sutton Way and Whitby Road was used as the central point for calculations in Ellesmere Port. As can be seen in the map, motorways have a significant influence on commuting times and workforce access.

To collate the data for workforce overview, the lower layer super output areas* (LSOAs) population weighted centroids that fell into the 10 min, 20min, 30min and 45min drive time isochrones were identified. These LSOA's were then cross-referenced with the 2011 Census Data that provided key information on education, workforce participation, access to transport and occupation type amongst others.

In the data tables, the numbers shown for each of the commuting isochrones are cumulative totals.

** Lower Layer Super Output Areas (LLSOA's or LSOA's) are national statistical boundaries created by the Office for National Statistics to improve the reporting of small area statistics. They have a minimum population of 1000 people, and a mean population of 1500.*

Glossary of terms

Economically active: 'Economically active' covers those who were in full- or part-time employment and those not in employment but actively seeking and available for work (unemployed) - it includes full time students.

Highest level of qualification;

- **No Qualifications:** No academic or professional qualifications
- **Level 1 qualifications:** 1-4 O Levels/CSE/GCSEs (any grades); Entry Level, Foundation Diploma; NVQ level 1; Foundation GNVQ; Basic/Essential Skills
- **Level 2 qualifications:** 5+ O Level (Passes)/CSEs (Grade 1)/GCSEs (Grades A* - C); School Certificate; 1 A Level/ 2-3 AS Levels/VCEs; Intermediate/Higher Diploma; Welsh Baccalaureate Intermediate Diploma; NVQ level 2; Intermediate GNVQ; City and Guilds Craft; BTEC First/General Diploma; RSA Diploma.
- **Apprenticeship**
- **Level 3 qualifications:** 2+ A Levels/VCEs; 4+ AS Levels; Higher School Certificate; Progression/Advanced Diploma; Welsh Baccalaureate Advanced Diploma; NVQ Level 3; Advanced GNVQ, City and Guilds Advanced Craft, ONC, OND; BTEC National; RSA Advanced Diploma
- **Level 4+ qualifications:** Degree (for example BA, BSc); Higher Degree (for example MA, PhD, PGCE); NVQ Level 4-5, HNC, HND, RSA Higher Diploma; BTEC Higher level; Foundation degree (NI),
- **Other qualifications:** Vocational/Work-related Qualifications; Foreign Qualifications (Not stated/ level unknown).

Cars or vans in household: This is the number of cars or vans that are owned, or available for use, by one or more members of a household. This includes company cars and vans that are available for private use. It does not include motorbikes or scooters, or any cars or vans belonging to visitors.



Occupation: A person's occupation relates to their main job and is derived from either their job title or details of the activities involved in their job. This is used to assign responses to an occupation code based on the Standard Occupational Classification 2010 (SOC2010).

JSA: Job Seeker's Allowance is an unemployment benefit. It can be claimed by people who are available for and actively seeking employment. It was used as the headline figure for the Claimant Count, measuring the number of people claiming benefits for the reason of being unemployed, until the introduction of Universal Credit in 2013.

Universal Credit: This is a monthly benefit payment which is replacing Child Tax Credit, Housing Benefit, Income Support, income-based Jobseeker's Allowance (JSA), income-related Employment and Support Allowance (ESA), Working Tax Credit. Each Universal Credit claimant will be put into one of six conditional regime categories based on their circumstances and capability to work.

Universal Credit 'searching for work' category: Part of the design of Universal Credit is to support and encourage a wider group of benefit claimants into work. Claimants that are not working, or with very low earnings are required to secure work or more (better paid) work. These claimants must search and prepare for work, and are included in the Universal Credit 'searching for work' category.

Claimant Count: It is a measure of people claiming benefits principally for the reason of being unemployed. The claimant count measures the number of people claiming JSA and those placed in the Universal Credit (UC) 'searching for work category'. As the number of claimants in the searching for work increases with the roll out of Universal Credit, the Claimant Count is set to rise irrespective of economic conditions. The Claimant Count has been reclassified from a National Statistic to an Experimental Official Statistic due to inconsistencies within the series caused by universal credit. Caution should be taken when comparing the count over time and across locations due to the phased nature of the roll out of Universal Credit.

BRES estimates: The Business Register and Employment Survey (BRES) is the official source of employee and employment estimates by detailed geography and industry. The survey collects employment information from around 80,000 businesses across the whole of the UK economy for each site that they operate.

These figures should be treated with caution as:

- Reported workplace location and industry may not always be accurate especially for some business with employees on multiple sites or umbrella companies. (This particularly affects industries such as accounting, auditing and bookkeeping and other business support service activities.)
- BRES is a sample survey and accuracy will depend on how representative the sample is and response rates over time.
- BRES Statistics are subject to ONS rounding rules and the figures derived may be less precise than those based on the underlying, unrounded data.



Accessing Cheshire West and Chester Council
information and services.

Council information is also available in audio, braille, large print or other formats. If you would like a copy in a different format, in another language or require a British Sign Language interpreter, please email us at: equalities@cheshirewestandchester.gov.uk

Telephone: **0300 123 8 123**

Textphone: **18001 01606 867 670**

Email: equalities@cheshirewestandchester.gov.uk

Web: www.cheshirewestandchester.gov.uk

If you would like further information about this report or other JSNA products,
please contact Strategic Intelligence

Telephone: **01244 972176**

Email: research@cheshirewestandchester.gov.uk

Insight and Intelligence, HQ, 58 Nicholas Street, Chester CH1 2NP

Access JSNA products online www.cheshirewestandchester.gov.uk/jsna