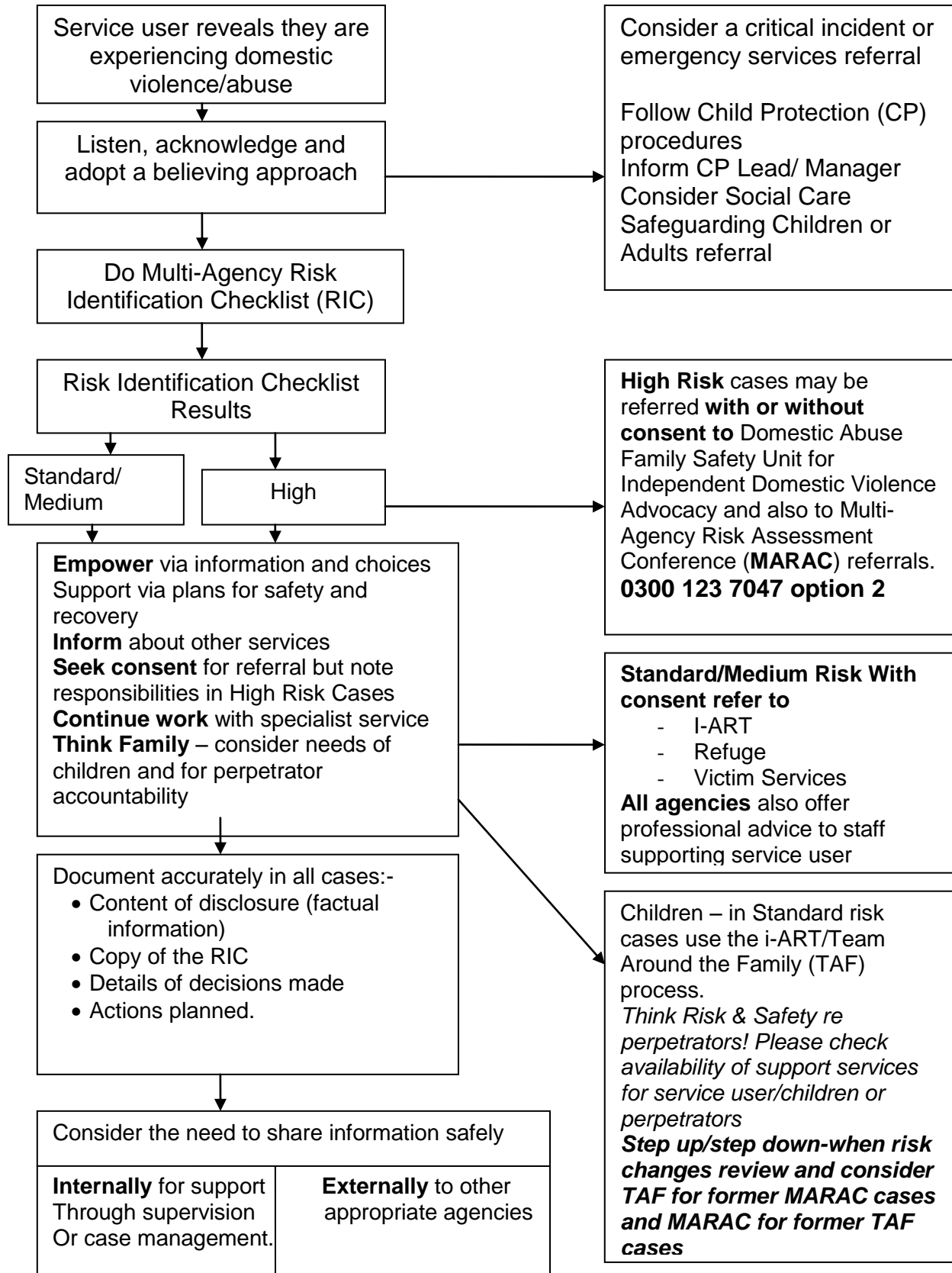


What to do in the event of disclosure of domestic violence and abuse

See www.cheshirewestandchester.gov.uk/domesticabuse

for Risk Assessment and Referral forms and service provision for whole family



Agency/intervention	Number	Type of support
Adult Safeguarding (Gateway Team)	0300 123 7034 (01244 977277- out of hours)	Responding to concerns for adults at risk
Cheshire Cares (Victim Services)	01606 366 336	Support related to any crime, reported or not
Cheshire Fire and Rescue Service	01606 868465	Home Safety Assessments
Cheshire Without Abuse	01270 250390	Refuge Accommodation, Advice and Support Programmes
Children's Programmes Change and Recovery	Contact –i-ART 0300 123 7047	Acorns and Changing Places preventive programmes for: 8 -13yr olds; 13-21yr olds. Jigsaw - recovery programme for children affected by DVA
Core Assets	01925 846190 cwac.parenting@coreassets.com	For referrals for Parenting programmes and the Gateway DVA Recovery Programme
Domestic Abuse Family Safety Unit – West Cheshire	0300 123 7047 option 2	High risk clients – Independent Domestic Violence Advocates + MARAC
Honour Violence <i>Karma Nirvana</i> <i>Forced Marriage Unit</i>	0800 5999 247 020 7008 0151	Supporting people exposed to 'honour' crime eg. forced marriage
Integrated Access and Referral Team (i-ART) Single front door	0300 123 7047 (01244 977277- out of hours)	For concerns re children's welfare, families requiring a multi-agency response and individuals affected by DVA
LGBT Helpline	0300 999 5428 or 0800 999 5428	Specialist helpline for LGBT
M.A.L.E	0808 801 0327	Specialist helpline for men
National Stalking Helpline	0808 802 0300	Support for those experiencing harassment, including support for their friends and family
P3 (People Potential Possibilities)	0808 168 6503	Supporting people locally to keep their homes and independence
Police (24 hour)	101	Police Services
Quarriers	Referrals to: i-ART 0300 123 7047	Support for children and young people affected by DVA, within refuge, community venue or a "home" visiting service
Rape Sexual Abuse Support Centre	01244 907710 0330 363 0063 www.rapecentre.org	Independent Sexual Violence Adviser
RESPECT	0808 802 4040	National information and support for abusers/supporting agencies and community
St Mary's Sexual Assault Referral Centre (SARC)	0161 276 6515	Comprehensive and co-ordinated forensic, counselling and aftercare service
Voluntary Perpetrator Community DVA Prog	01244 665100 chs.dareferral@cheshire.prob.gsi.gov.uk	Delivered by Probation for practitioners' clients who are motivated to understand why they are abusive and want to develop skills required for a healthy relationship
WHAG	0151 356 4686 chesterreferrals@whag.info	Refuge accommodation and Support