

Cheshire West & Chester Council

# Carbon Management Plan

2016-2020

Phase 2

low co<sub>2</sub>uncil



Cheshire West  
and Chester

## Foreword

---

Cheshire West and Chester Council is ambitious in everything that it does and aims to be recognised as a top performing local authority in delivering this Carbon Management Plan.

We achieved the target set in our last 5 year Carbon Management Plan by reducing scoped emissions by 30% against the 2014-2015 baseline. This demonstrates our commitment to one of our key roles; acting as a strong community leader in mitigating against Climate Change.

The Council has a duty to reduce greenhouse gases, and as part of our response to that agenda I am delighted to present this Carbon Management Plan for the next period to ensure this Council remains carbon fit.

We believe that our continued rigorous action can act as a clear catalyst for the thriving community at large to seek out ways to reduce energy and carbon and developing more renewable sources of generating energy.

A continuing focus on our efficiency will be a key driver. Rigorous asset challenges are in progress to reduce our property holdings alongside an investment programme to refurbish and refit other property appropriately for modern service delivery. Utilisation of the right technologies is also paramount to this agenda.

Street lighting and schools are a key focus in terms of carbon reduction and savings in budgets, but also as part of the cultural change required in society. Engaging with pupils is fundamental to delivering sustainable and successful change.

We hope that everyone can see that commitment demonstrated in this Carbon Management Plan will help deliver environmental benefits as well as real savings and efficiencies that will help meet our ongoing budget challenges.



**Councillor Karen Shore**  
Cabinet Member for  
Environment



### 3 Carbon Management Plan

## Legislative Context

The Government has taken a number of steps to limit the UK's emissions of greenhouse gases through legally binding targets, both now and in the future.

The Climate Change Act 2008 sets the framework for how the UK will manage and respond to the threat of climate change.

It includes:

- 2050 Target - committing the UK to reducing total greenhouse gas emissions by at least 80% in 2050 from 1990 levels.
- Carbon Budgets\* - legally-binding limits on the total amount of greenhouse gas emissions the UK can emit for a given five-year period.

The gases identified as contributing to climate change include: carbon dioxide (CO<sub>2</sub>), methane (CH<sub>4</sub>), hydrofluorocarbons (HFCs), nitrous oxide (N<sub>2</sub>O), perfluorocarbons (PFCs) and sulphur hexafluoride (SF<sub>6</sub>).

It is standard practice to report greenhouse gas emissions in tonnes of CO<sub>2</sub> equivalents (CO<sub>2</sub>e)\* and guidance for doing so is issued by DEFRA.

## Local Responsibility

In March 2011 the Government signed a memorandum of understanding with the Local Government Association that recognised the pivotal role that local authorities have in tackling climate change. Local authorities were requested to measure and report their greenhouse gas emissions from their own estate and operations by the end of July each year.

To encourage participation, the Local Government Association established a 'Climate Local' initiative to support councils both to reduce carbon emissions and to increase resilience to a changing climate. Cheshire West and Chester Council signed the Climate Local Commitment in 2012 in recognition of the important role that local authorities have in tackling climate change.

In signing this commitment we pledged to:

- Set local commitments and actions to reduce our emissions and to manage climate impacts.
- Publish our commitments, actions and progress, enabling local communities to hold us to account;
- Share the learning from our experiences and achievements with other councils; and
- Regularly refresh our commitments and actions to ensure they are current and continue to reflect local priorities.

\*Carbon Budget - a cap on the amount of greenhouse gases emitted in the UK over a five-year period. A series of these has been established within The Climate Change Act 2008 to ensure that regular progress is made towards the target set for 2050.

\*CO<sub>2</sub>e - 'Carbon dioxide equivalent' or 'CO<sub>2</sub>e' is a term for describing different greenhouse gases in a common unit. For any quantity and type of greenhouse gas, CO<sub>2</sub>e signifies the amount of CO<sub>2</sub> which would have the equivalent global warming impact.

## Our Vision for Energy and Carbon Management

Cheshire West and Chester Borough Council will reduce its carbon emissions and thereby reduce our contribution to climate change. We will implement affordable and practical actions that deliver real savings in energy, carbon and financial terms.

Carbon management will be a key factor in how we commission and procure services and in our work with communities, partners and other stakeholders.

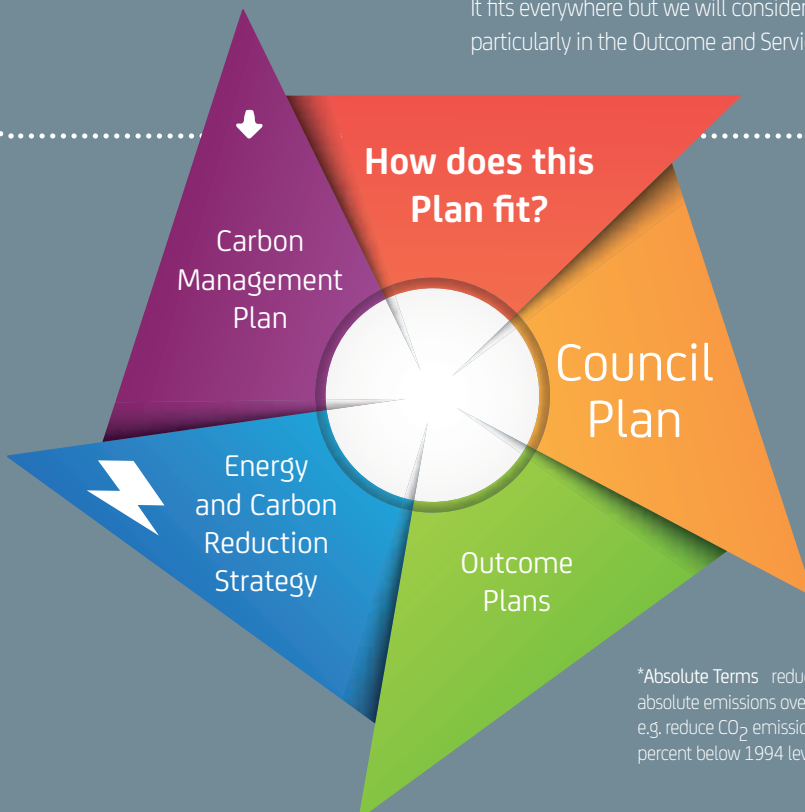
## Our Baseline and Target

In the 2014-2015 fiscal year Cheshire West and Chester Borough Council were responsible for emitting 45,543 equivalent tonnes of carbon dioxide (CO<sub>2</sub>e)

The Council is setting an aspirational target to reduce these emissions in absolute terms\* by 30% by April 2020 emitting 31,880 tonnes of CO<sub>2</sub>e.

## Energy and its impacts

Energy is a key resource underpinning much of the Council's services and activity. It fits everywhere but we will consider it particularly in the Outcome and Service Plans.



\*Absolute Terms – reduction in absolute emissions over time, e.g. reduce CO<sub>2</sub> emissions by 25 percent below 1994 levels by 2015.

# What is included?

The Council has expanded its scope from previous years to include all emissions within the financial boundary of the Authority where a clear and measureable data source can be verified and accounted for.

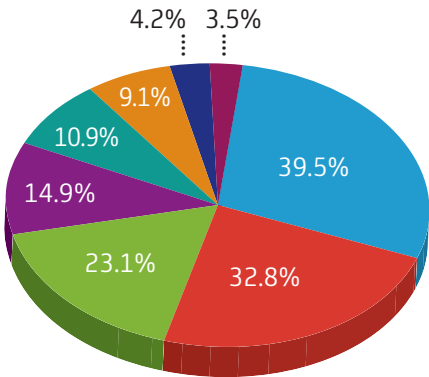
This includes:

- Gas that we burn
- Business miles that Council's staff travel.

- Emissions associated with electricity, purchased by the Council.
- Emissions associated with water purchased by the Council.
- Waste that we collect and process.

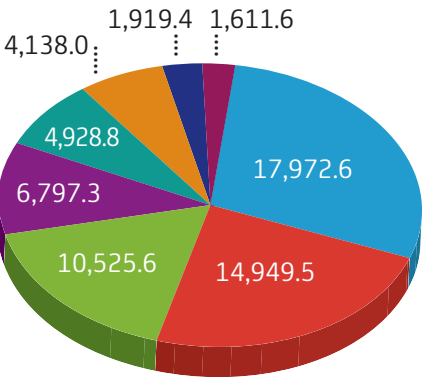
Our emissions are reduced by any renewable electricity we generate which is exported to the national grid for someone else to use.

Baseline percentage of emissions from areas of the Council's services



- Waste sent from disposal (land/combustion)
- Schools
- Street lights and fountains
- Business mileage

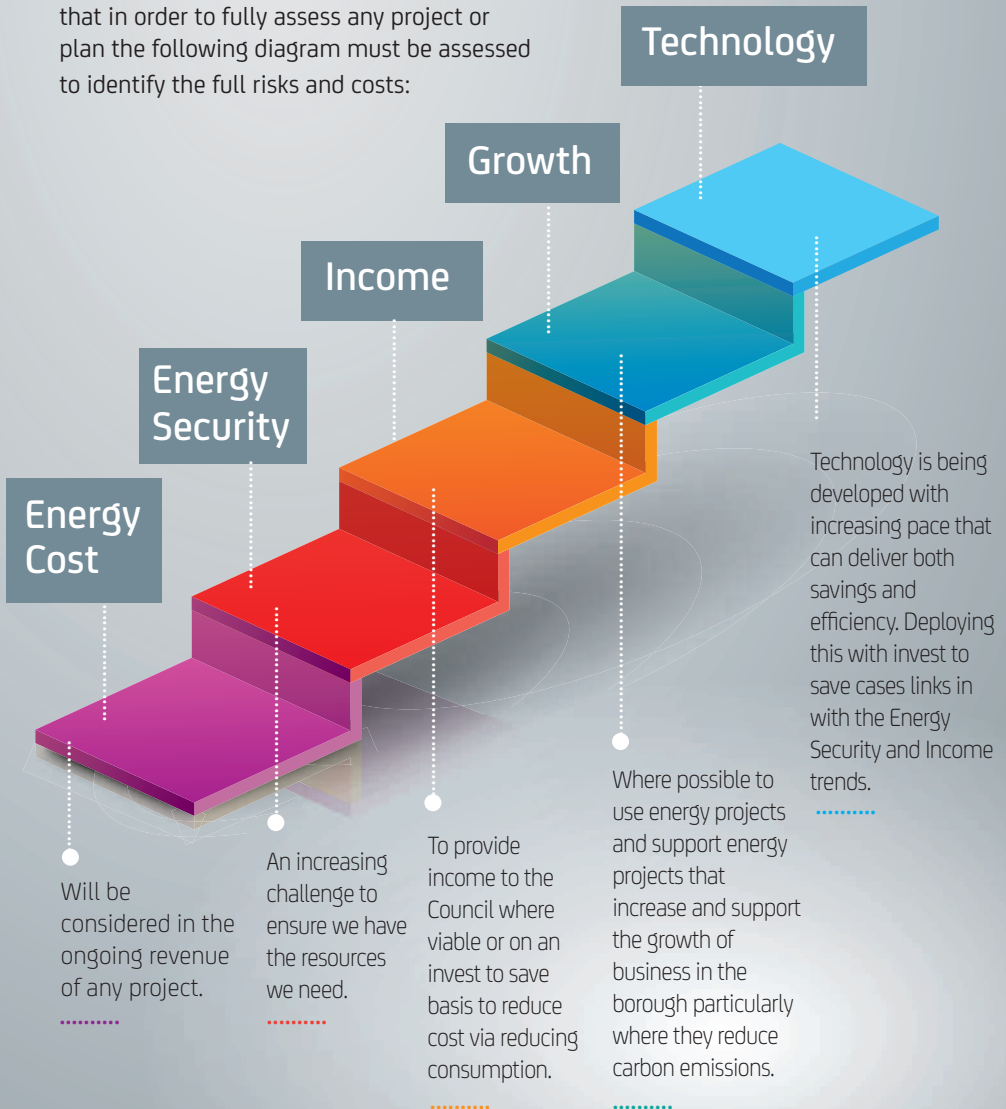
Baseline tonnes of CO<sub>2</sub>e from areas of the Council's services



- Corporate
- Commercial
- Leisure and libraries
- Waste sent for recycling

## Context and drivers for carbon management

Cheshire West and Chester Council recognises that in order to fully assess any project or plan the following diagram must be assessed to identify the full risks and costs:





# Principal actions

To deliver the Plan, we will focus on 5 key strategic themes, they include:

**Renewable generation**

Working with partners to deliver renewable energy generation on our estates

**Street lighting**

Conversion of residential street lighting to more efficient LED lighting

**Smarter assets**

Using innovative and smart technology to ensure our assets are energy efficient

**Waste and recycling**

Aiming for a 60% recycling rate within the borough

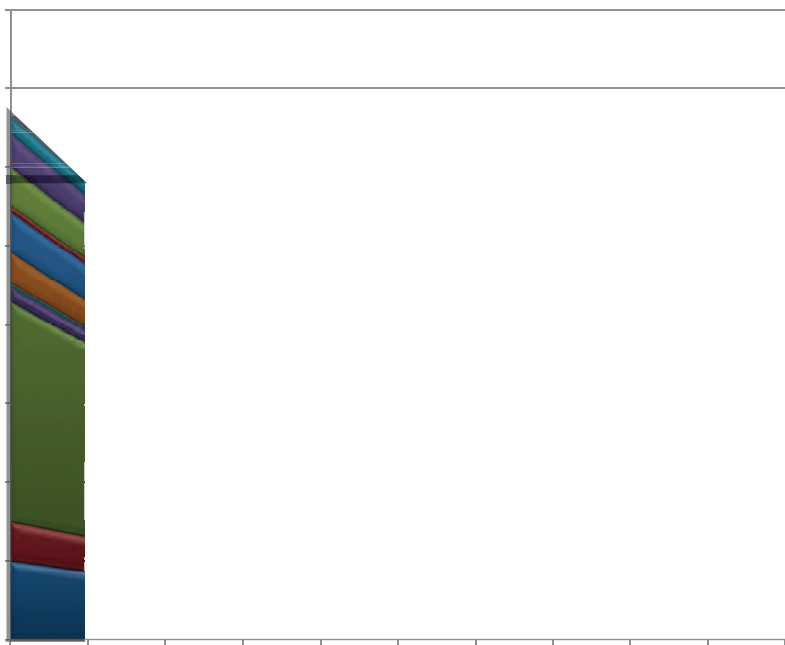
**Schools**

Enabling schools to invest in energy efficiency projects



# Borough Wide Emissions

Cheshire West and Chester Council have an influencing brief over the Borough wide emissions to meet Governmental targets. We will continue to monitor the influences on the Borough's emissions. The below is the current graph of the emissions from the available data.



- Transport other
- Diesel railways
- Transport other (Minor Roads)
- Road transport (Motorways)
- Road transport (A roads)
- Domestic (other fuels)
- Domestic gas

- Domestic electricity
- Agriculture
- Industrial and Commercial other fuels
- Large industrial installations
- Industry and commercial gas
- Industry and commercial electricity



### Accessing Cheshire West and Chester Council information and services

Council information is also available in Audio, Braille, Large Print or other formats. If you would like a copy in a different format, in another language or require a BSL interpreter, please email us at **[equalities@cheshirewestandchester.gov.uk](mailto:equalities@cheshirewestandchester.gov.uk)**

---

**Tel:** 0300 123 8 123 **Textphone:** 18001 01606 867 670

**email:** [equalities@cheshirewestandchester.gov.uk](mailto:equalities@cheshirewestandchester.gov.uk)

**web:** [www.cheshirewestandchester.gov.uk](http://www.cheshirewestandchester.gov.uk)

For further information about this Strategy email the Energy and Carbon Reduction Team at: [climatechange@cheshirewestandchester.gov.uk](mailto:climatechange@cheshirewestandchester.gov.uk)