

Notes

Key to symbols

Reference drawings

Rev	Date	Drawn	Description	Ch'k'd	App'd
M		M	Royal Liver Building Pier Head Liverpool, L3 1JH United Kingdom T +44 (0)151 482 9910 F +44 (0)20 8681 5706 W mottmac.com		

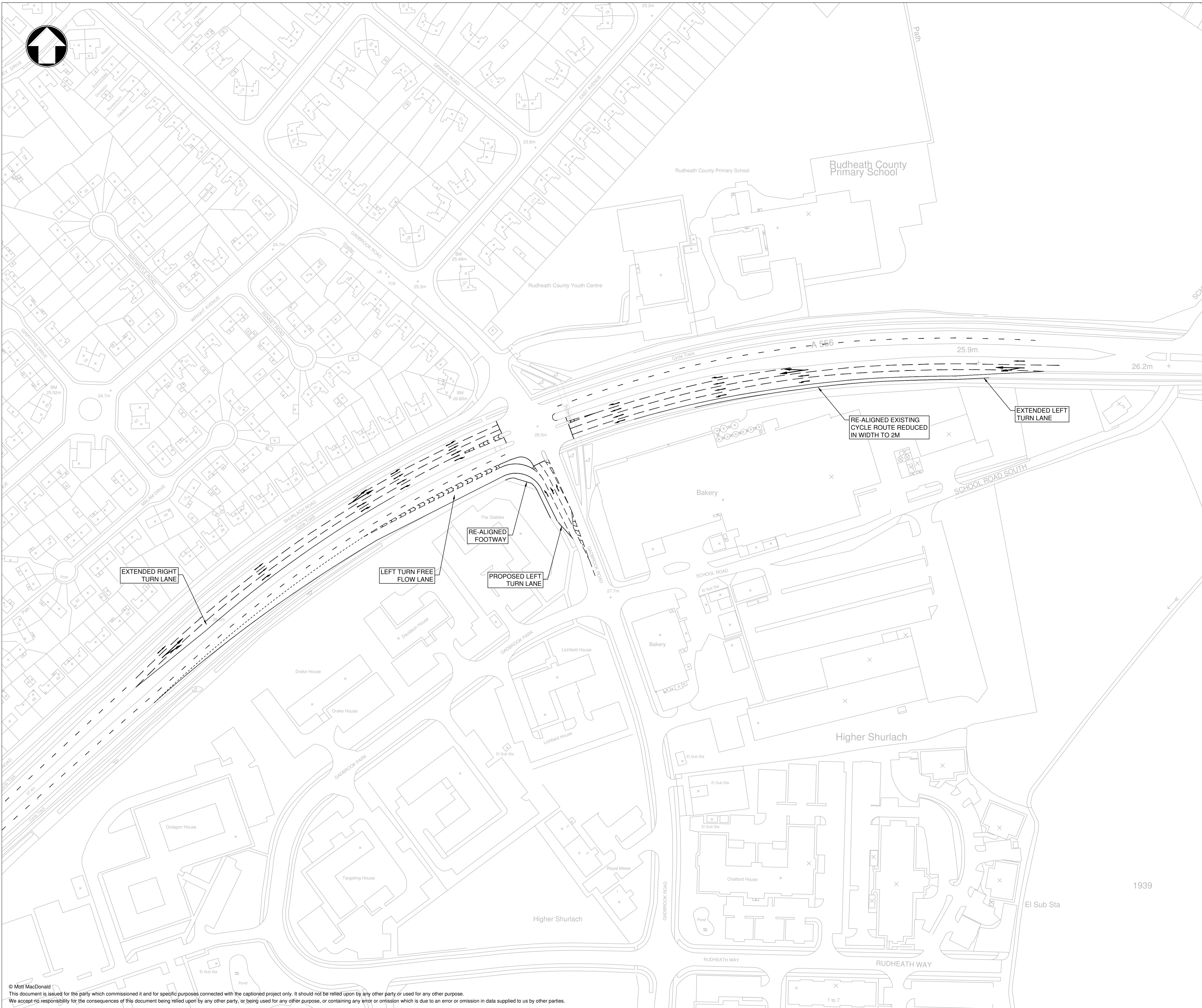
Client



Title
Gadbrook Road/A556 Junction
Existing
General Arrangement

Designed	M S Davies	Eng check	
Drawn	M S Davies	Coordination	
Dwg check	C Hunter	Approved	P Walton
Scale at A1	Status	Rev	Security
1:1000	PRE	P1	STD
Drawing Number 387230-MMD-00-XX-DR-C-0001			

© Mott MacDonald
 This document is issued for the party which commissioned it and for specific purposes connected with the captioned project only. It should not be relied upon by any other party or used for any other purpose.
 We accept no responsibility for the consequences of this document being relied upon by any other party, or being used for any other purpose, or containing any error or omission which is due to an error or omission in data supplied to us by other parties.



Notes

Key to symbols

Reference drawings

Rev	Date	Drawn	Description	Ch'k'd	App'd
M			Royal Liver Building Pier Head Liverpool, L3 1JH United Kingdom		
M			T +44 (0)151 482 9910 F +44 (0)20 8681 5706 W mottmac.com		

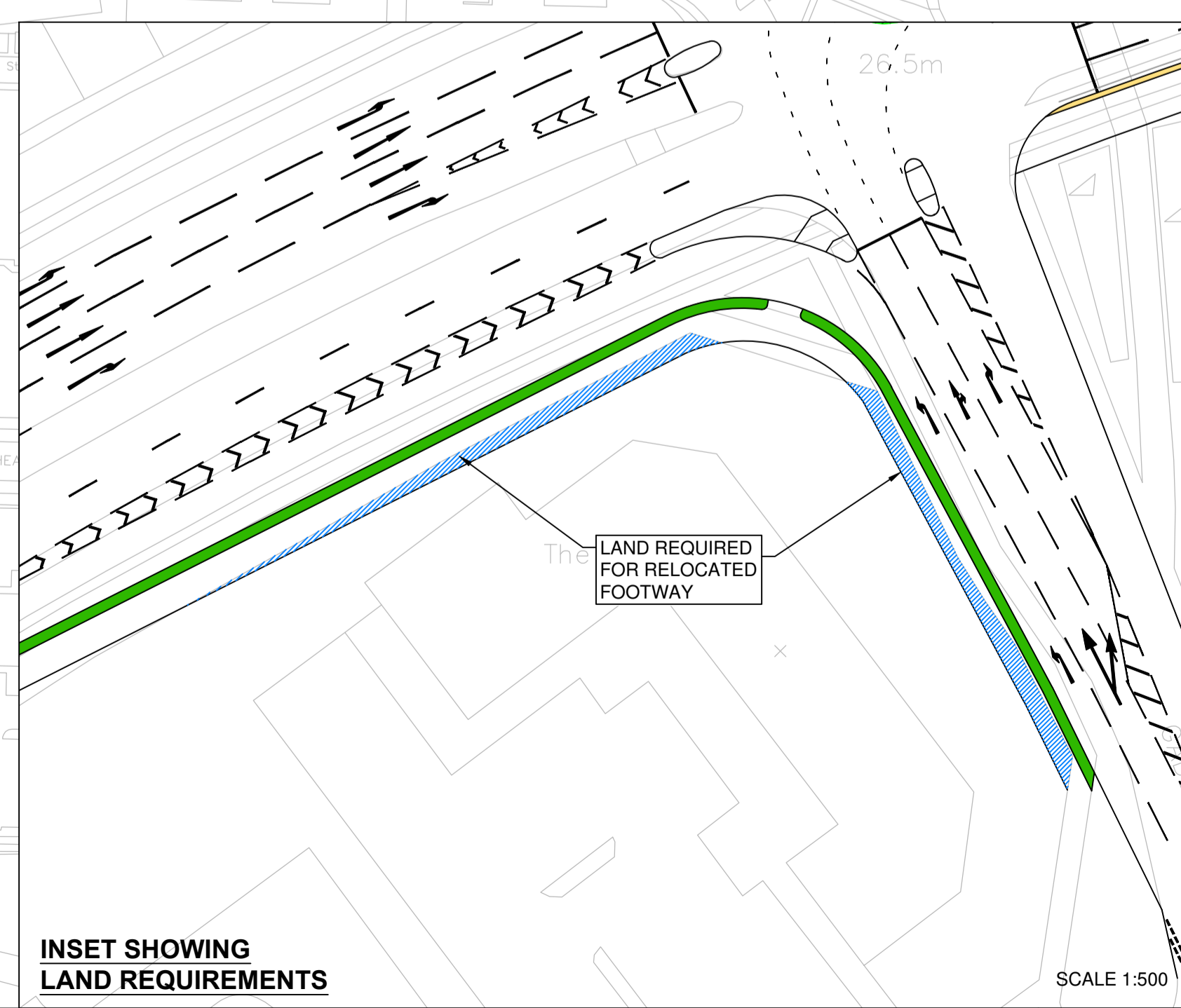
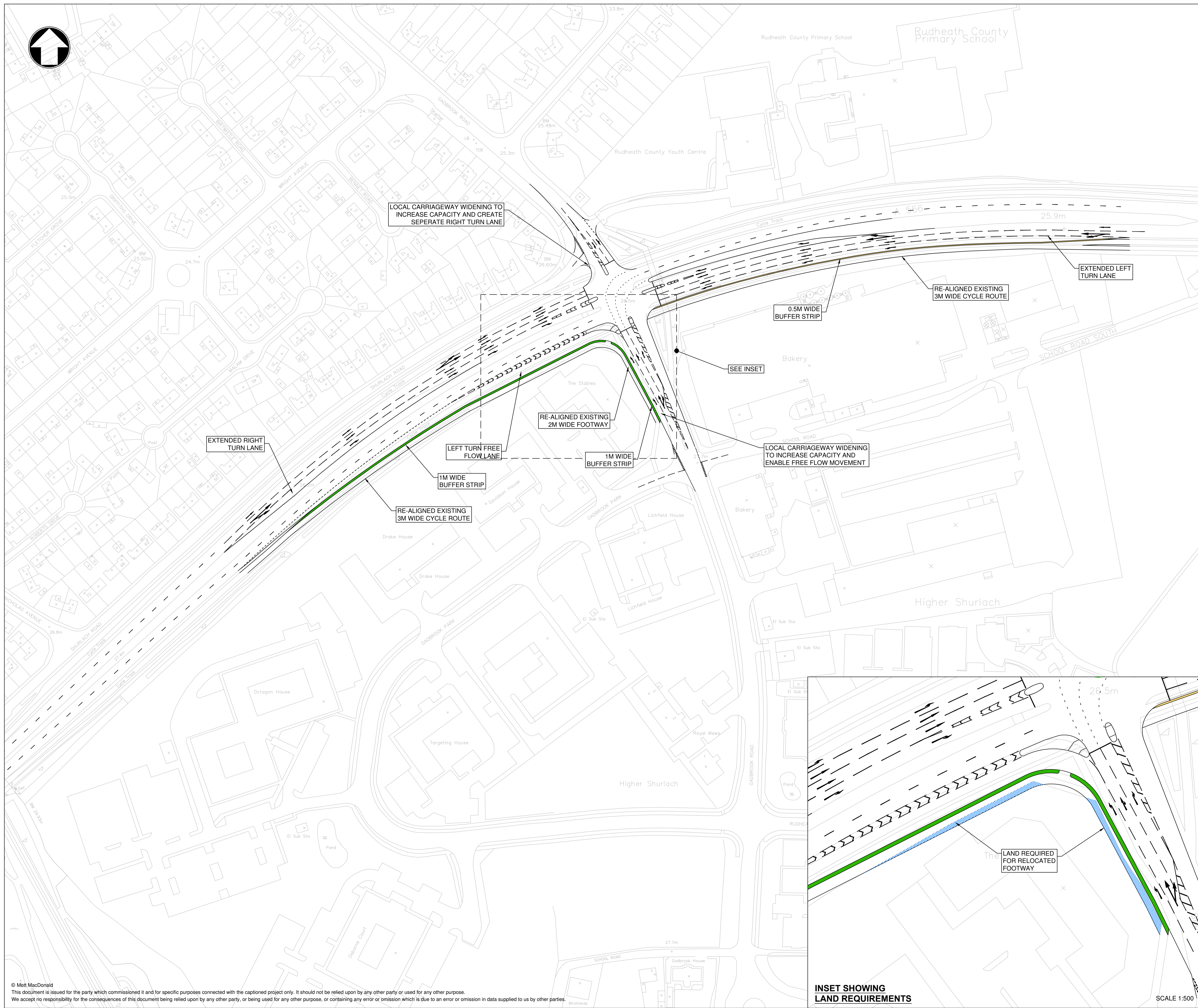
Client

Cheshire West and Chester

Title
**Gadbrook Road/A556 Junction
 Proposed Option 1 (CWAC Design)
 General Arrangement**

Designed	M S Davies	Eng check	
Drawn	M S Davies	Coordination	
Dwg check	C Hunter	Approved	P Walton
Scale at A1	Status	Rev	Security
1:1000	PRE	P1	STD
Drawing Number 387230-MMD-00-XX-DR-C-0002			

© Mott MacDonald
 This document is issued for the party which commissioned it and for specific purposes connected with the captioned project only. It should not be relied upon by any other party or used for any other purpose.
 We accept no responsibility for the consequences of this document being relied upon by any other party, or being used for any other purpose, or containing any error or omission which is due to an error or omission in data supplied to us by other parties.
 P:\Liverpool\ITD\Projects\387230 Gadbrook NPI\F5. Drawings\Proposed Junction CWAC Design.dwg Jun 13, 2017 - 3:16PM dav69047



Notes

Key to symbols

Reference drawings

Rev	Date	Drawn	Description	Ch'k'd	App'd

M MOTT MACDONALD
 Royal Liver Building
 Pier Head
 Liverpool, L3 1JH
 United Kingdom
 T +44 (0)151 482 9910
 F +44 (0)20 8681 5706
 W mottmac.com

Client

Cheshire West and Chester

Title

Gadbrook Road/A556 Junction
 Proposed Option 2 (MM Design)
 General Arrangement

Designed	M S Davies	Eng check	
Drawn	M S Davies	Coordination	
Dwg check	C Hunter	Approved	P Walton
Scale at A1	Status	Rev	Security
1:1000	PRE	P1	STD
Drawing Number		387230-MMD-00-XX-DR-C-0003	