

Chester to Ellesmere Port Canal Towpath Improvement Scheme

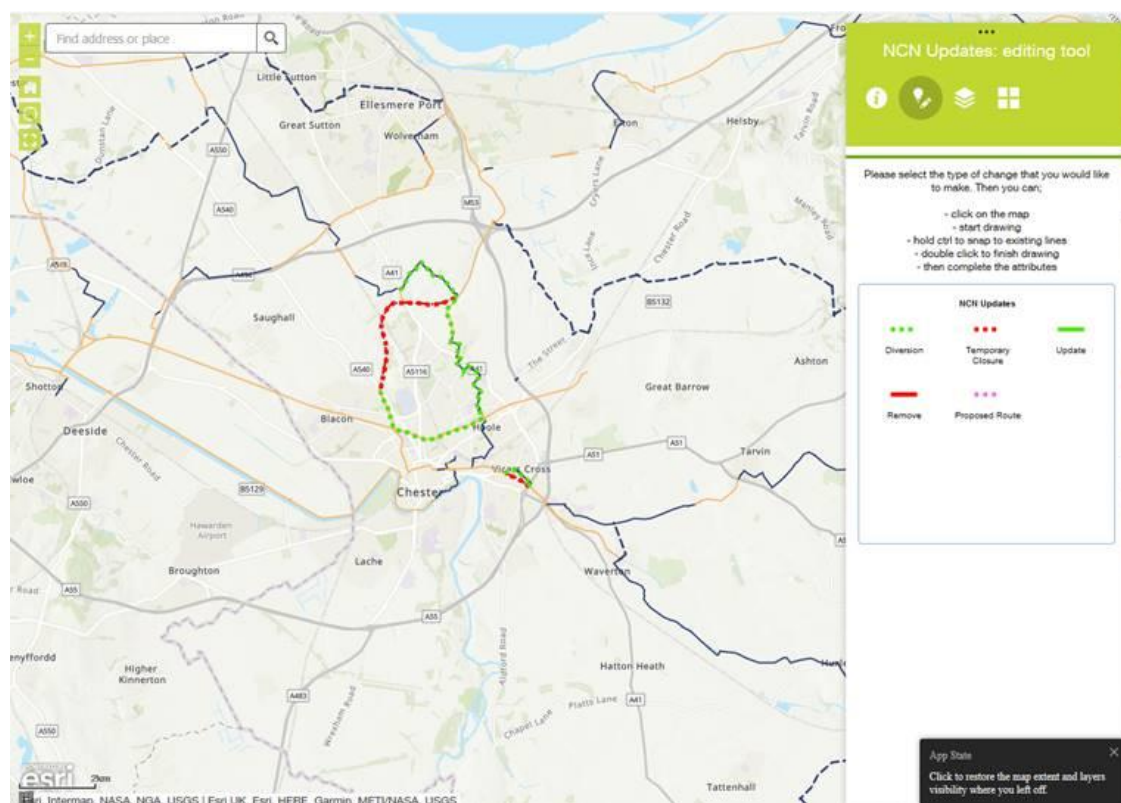
We encourage people to strictly observe social distancing at all times, following the latest advice from the government. Over the coming months it will be necessary to close sections of the Shropshire Union Canal towpath whilst work to upgrade the towpath is undertaken. Please remember to check your route online before you start your journey.

Temporary Diversions and Closures to the National Cycle Network:

For the latest National Cycle Route temporary diversions, please visit SUTRANS website at:

<https://www.sustrans.org.uk/national-cycle-network/>

Then click on the 'Open the National Cycle Network map', to load the below interactive map.



Shropshire Union Canal Notices and Stoppages:

Section 1, Chester to Ellesmere Port, Shropshire Union Canal

Please be advised the towpath between Bridge 134, Caughall and Bridge 131, Knolles on the Shropshire Union Canal will be closed to enable reconstruction works to take place from 28/09/2020 to 09/03/2021.

Information relating to the latest temporary stoppages along the canal towpath can be accessed below:

<https://canalrivertrust.org.uk/notices/18413-section-1-chester-to-ellesmere-port-shropshire-union-canal>

Section 2, Chester to Ellesmere Port, Shropshire Union Canal

Please be advised the towpath between Bridge 123, Tarvin Road and Bridge No 122B, A41 Road on the Shropshire Union Canal will be closed to enable reconstruction works to take place from 28/09/2020 to 22/12/2020.

Information relating to the latest temporary stoppages along the canal towpath can be accessed below:

<https://canalrivertrust.org.uk/notices/18414-section-2-chester-to-ellesmere-port-shropshire-union-canal>

The Holkham Play Area, Pocket Park, Great Boughton, Chester

Regrettably this play area will remain closed from 28/09/2020 until 28/02/2021 during the construction and reinstatement works to improve the local towpaths.