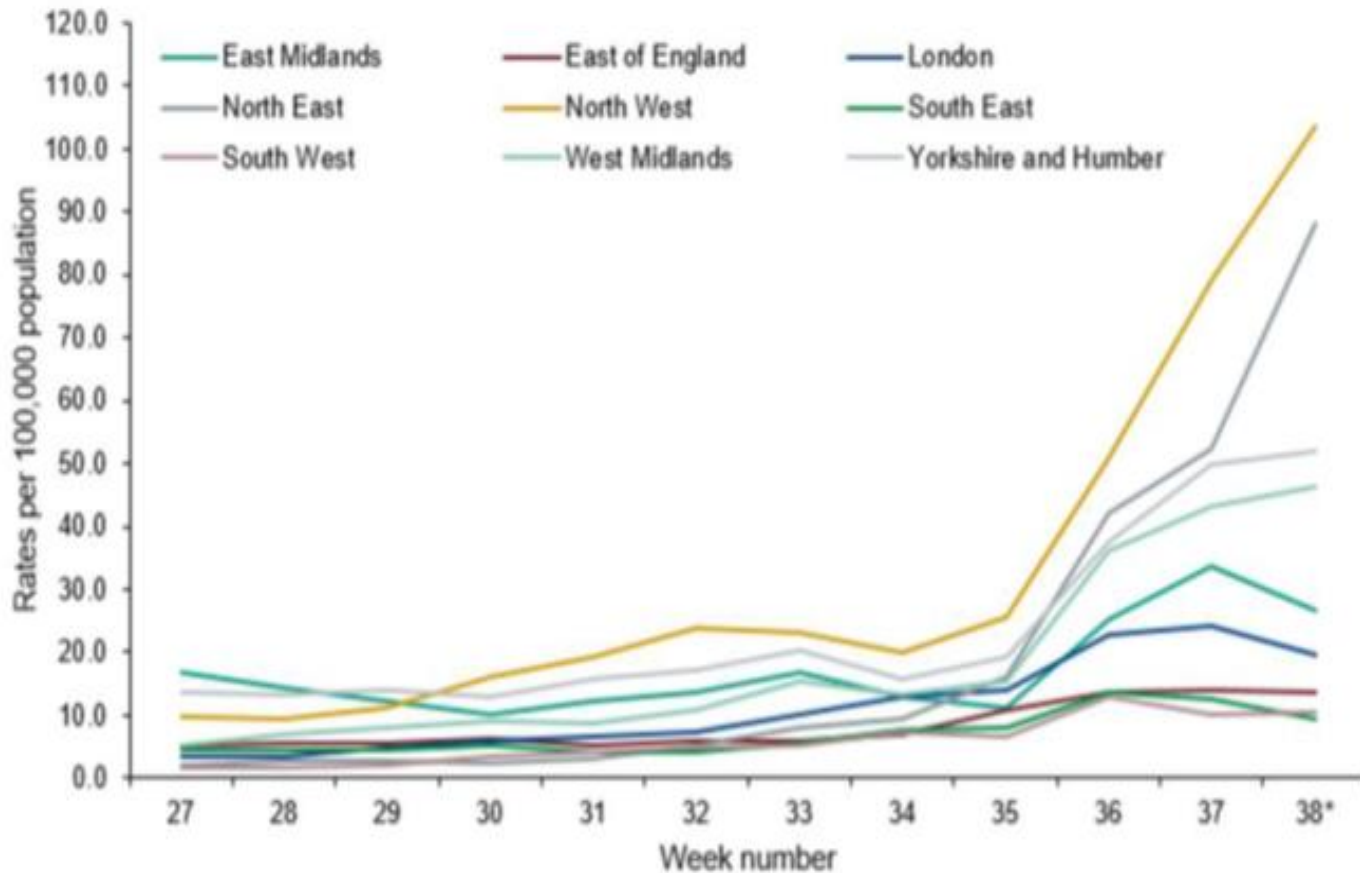


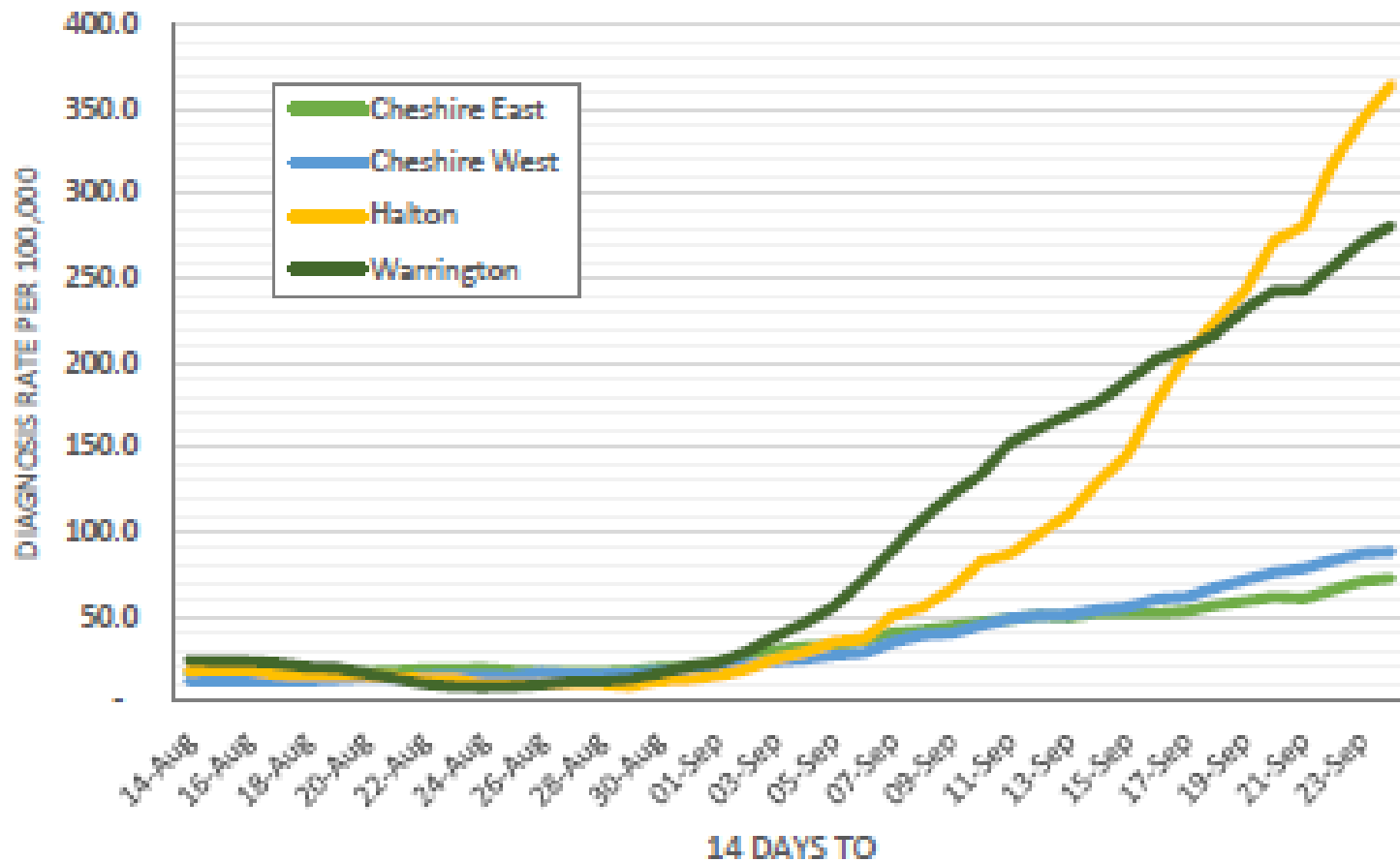
Cheshire West and Chester: COVID-19 Community Champions Update

29th September 2020

Rates per 100,000 by English region



14-day rates by day - Cheshire



CW&C COVID-19 summary

- To date in Cheshire West and Chester:
 - 2,605 cases (as at 27 September 4:00pm)
 - 201 cases in the last week (19-25 September)
 - 416 deaths involving COVID (data up to 11 September, published 22 September 2020)
 - 282 (68%) occurred in hospital
 - 112 (27% in a care home)
 - 15 (3%) at home
 - 4 (1%) in a hospice
 - 3 (1%) in an 'other communal establishment' or elsewhere

27/09/2020

<https://coronavirus.data.gov.uk/>

<https://coronavirus-staging.data.gov.uk/new-service>

Cases in Cheshire West and Chester ▾

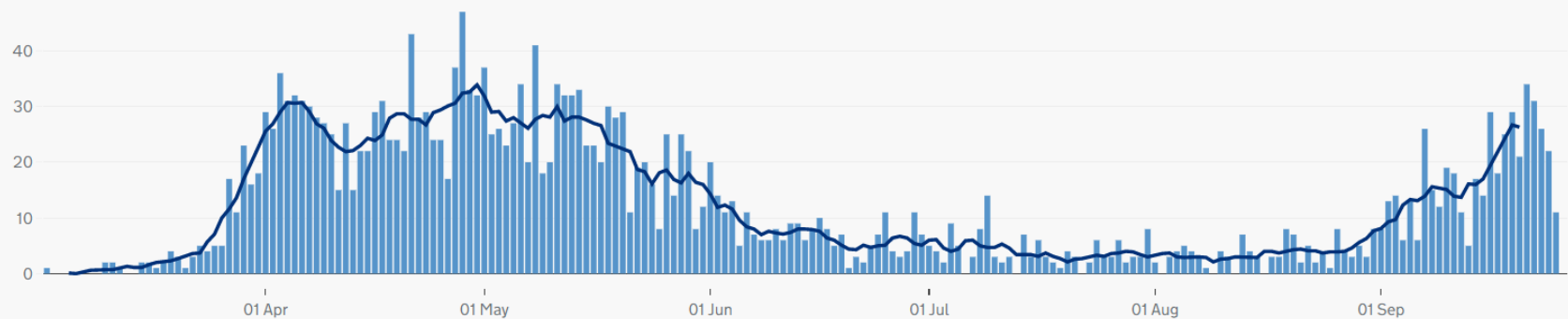
People tested positive

Daily	Total
28	2,605

Daily cases by specimen date

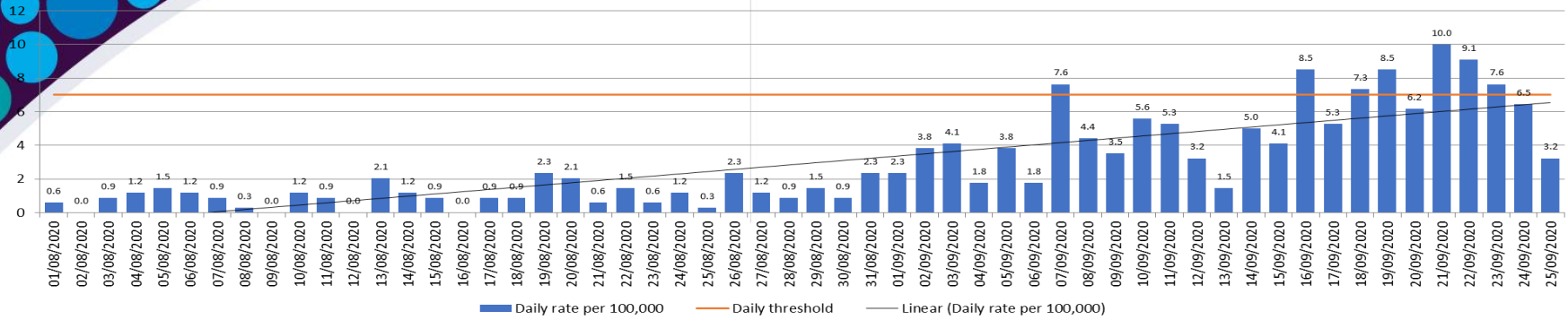
Number of people with at least one lab-confirmed positive COVID-19 test result, by specimen date. Individuals tested positive more than once are only counted once, on the date of their first positive test.

[Daily](#) [Cumulative](#) [Data](#) [About](#)

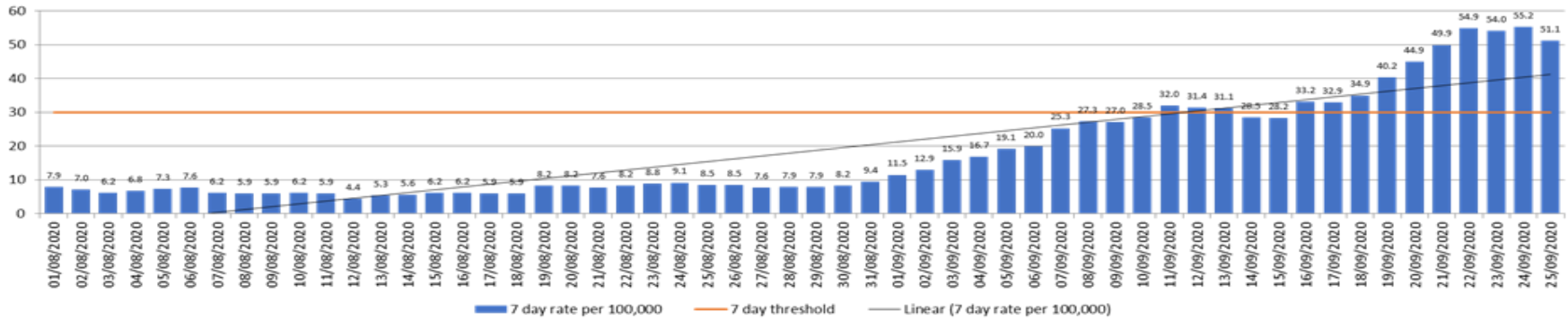


Show all ×

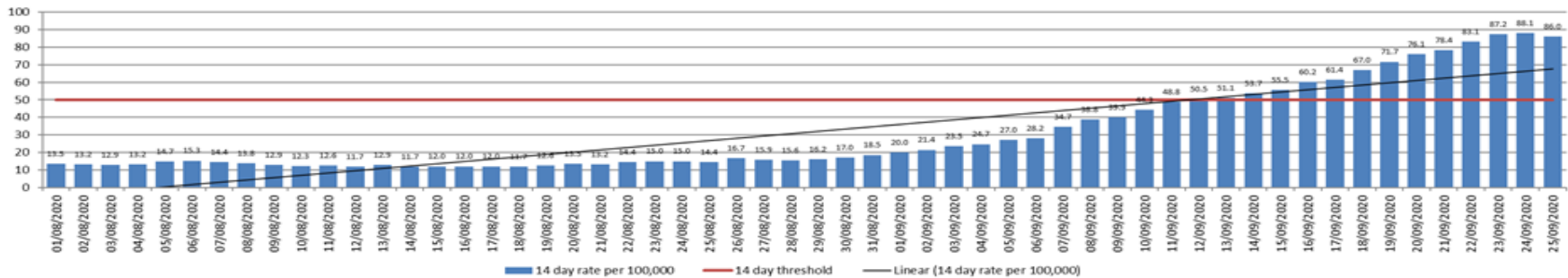
Cheshire West and Chester positive daily rate per 100,000



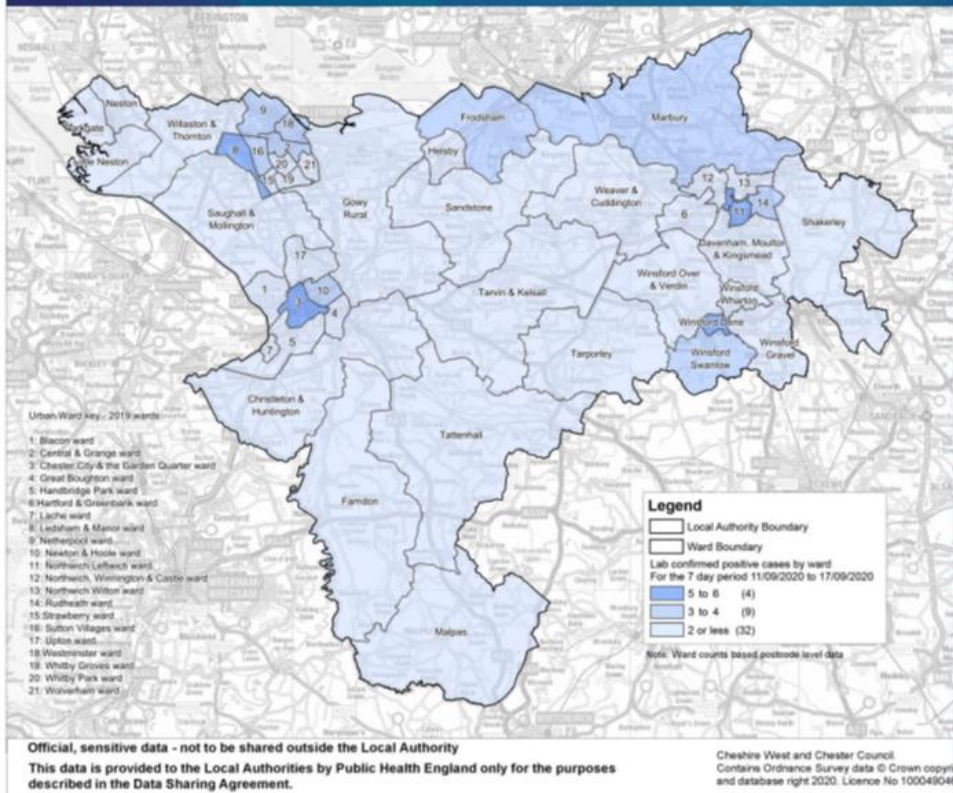
Cheshire West and Chester positive cases - 7 day rolling count rate per 100,000



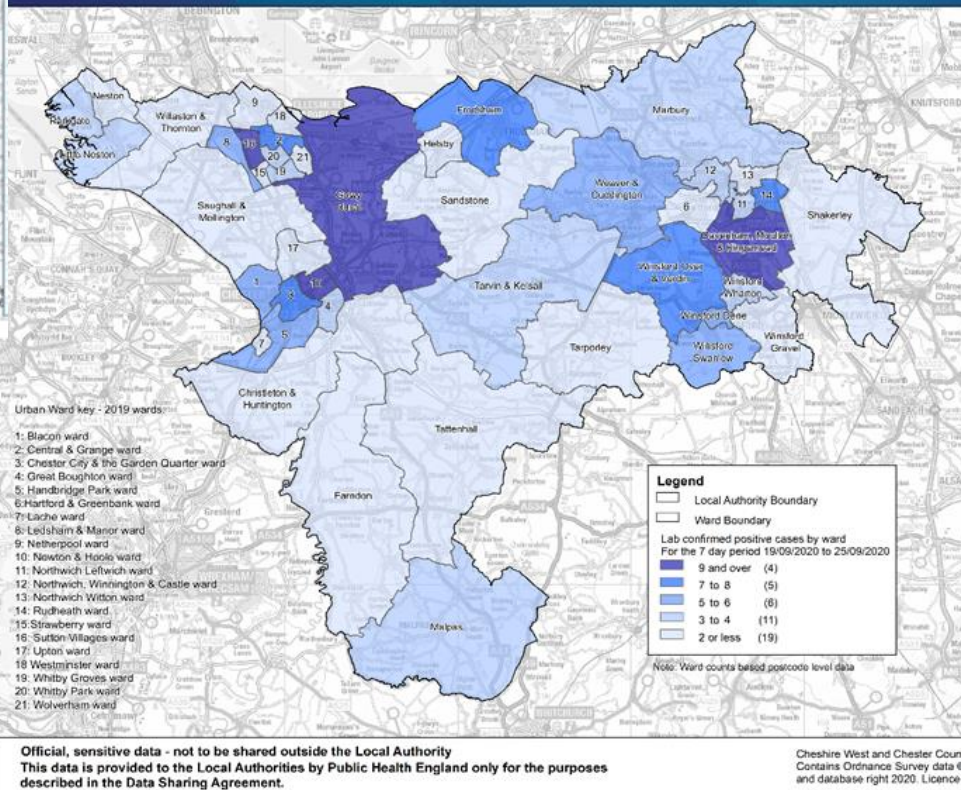
Cheshire West and Chester positive cases - 14 day rolling count rate per 100,000



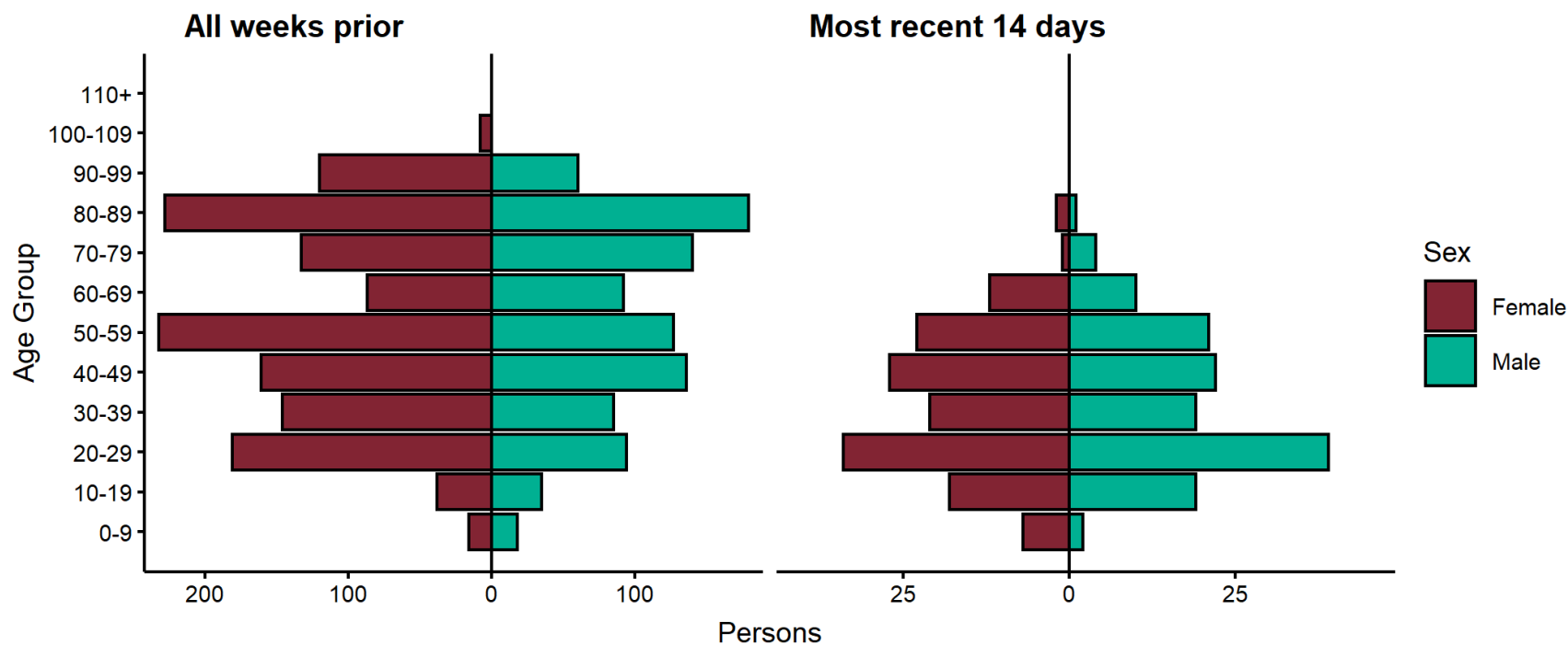
Covid 19 Response - Lab confirmed positive cases in Cheshire West and Chester by ward for the 7 day period 11th September to 17th September 2020



Covid 19 Response - Lab confirmed positive cases in Cheshire West and Chester by ward for the 7 day period 19th September to 25th September 2020



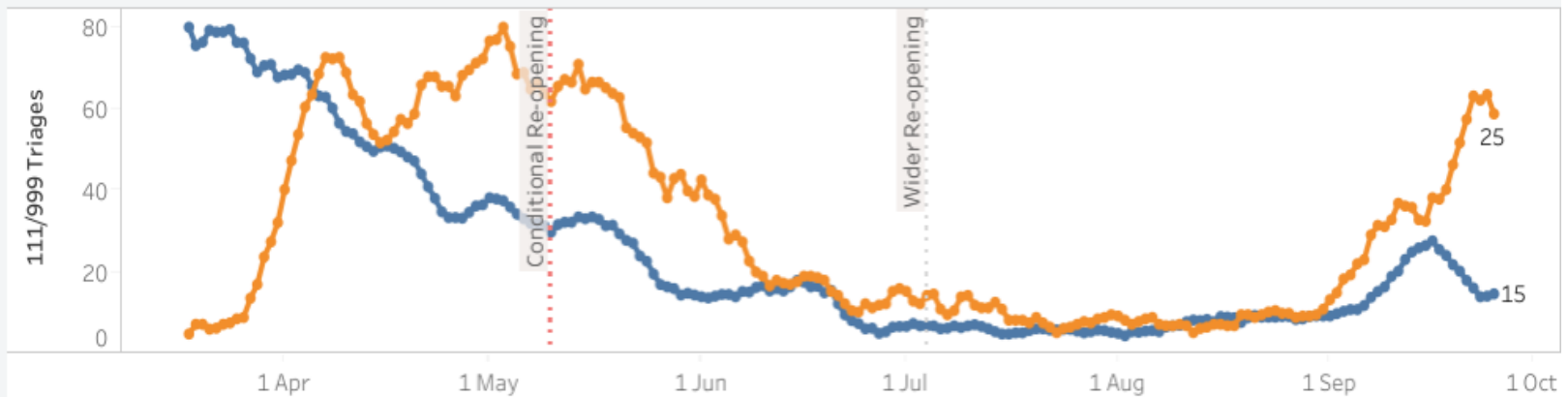
Age-sex pyramid for confirmed cases in past 14 days (13-26 September 2020) and all weeks prior



COVID-19 NHS 111 triages and cases

■ Triages ■ Cases

7-Day Moving Avg Trend of 111/999 Triages and Cases



111 Online Data excluded in only this chart. Last Updated (UTC): 28/09/2020 12:30:49

← Undo → Redo ↶ Revert 🔄 Refresh 🛑 Pause

🔗 Share 📄 Download 🖼️

▶ [I can't see the dashboard](#)

Any questions?

publichealth@cheshirewestandchester.gov.uk

Visit: cheshirewestandchester.gov.uk