

Broxton and District Neighbourhood Plan Referendum

Information Statement

A Referendum relating to the Broxton and District Neighbourhood Plan will be held on 13 October 2016.

The question which will be asked in the Referendum is:

“Do you want Cheshire West and Chester Council to use the Neighbourhood Plan for the Broxton and District Area to help it decide planning applications in the neighbourhood area?”

The Referendum area is identified on the map which is included with this Information Statement. The Referendum area is identical to the area which has been designated as the Broxton and District Neighbourhood area.

Who is entitled to vote?

A person is entitled to vote in the Referendum if on Thursday 13 October 2016

- he or she is entitled to vote in a local government election in the Referendum area (is registered to vote and is 18 years of age or over on Thursday 13 October 2016); and
- his or her qualifying address for the election is in the Referendum area. A persons qualifying address is, in relation to a person registered in the register of electors, the address in respect of which he or she is entitled to be registered.

You have to be registered to vote by 27 September 2016 in order to vote in the referendum.

You can check if you are registered to vote by calling 01244 977084.

If you are not on the electoral register, you will need to go online to www.gov.uk/register-to-vote and complete an online application form.

Remember..... If you're not registered, you won't be able to vote.

How to vote

There are three ways of voting:

In person: on Thursday 13 October 2016

Most people vote in person at their local polling station. It is easy and a member of staff will always help if you are not sure what to do.

- You will receive a poll card telling you where your polling station is.
- Polling stations are open from 7am to 10pm.
- **If you do not receive your poll card, you can contact Democratic Services on 01244 977084 to find out where your polling station is.**

By post:

- To vote by post, fill in an application form and send it to Democratic Services, HQ Building, 58 Nicholas Street, Chester CH1 2NP to arrive by 5.00pm on Wednesday 28 September 2016.
- Ballot papers can be sent overseas, but you need to think about whether you will have time to receive and return your ballot papers by Thursday 13 October 2016.
- You should receive your postal vote about a week before polling day. If it doesn't arrive in time, you can get a replacement up to 5.00pm on Thursday 13 October 2016.

By proxy:

If you can't go to the polling station and don't wish to vote by post, you may be able to vote by proxy. This means allowing somebody you trust to vote on your behalf. Proxy vote application forms are available from Democratic Services on 01244 977084.

Referendum expenses

The Referendum expenses limit that will apply in relation to the Referendum is £2385.19. The number of persons entitled to vote in the Referendum by reference to which that limit has been calculated is 393.

The Referendum will be conducted in accordance with procedures which are similar to those used at local government elections.

Specified documents

The specified documents are:

- The Broxton and District Neighbourhood Development Plan;
- Report of the independent examiner;
- Summary of the representations submitted to the independent examiner;
- Statement by the local planning authority that the draft plan meets the basic conditions and complies with the relevant legislation;
- A statement that sets out general information about town and country planning including neighbourhood planning and the referendum.

A copy of the specified documents, that is those documents listed above, may be inspected at:

www.cheshirewestandchester.gov.uk/neighbourhoodplanning

The documents can be viewed online on computer screens in the following Customer Service Centres:

- The Forum, Chester, CH1 2HS;
- Wyvern House, The Drummer, Winsford, CW7 1AH;
- Northwich Customer Service Centre, 1 The Arcade, Northwich, CW9 5AS;
- Ellesmere Port Customer Service Centre, First Floor, Ellesmere Port Library, CH65 0BG;
- Neston Library, Parkgate Road, Neston, CH64 6Q; and
- Frodsham Library and Integrated Services, Princeway, Frodsham, WA6 6RX.

All of the above centres are open between 9.00am and 5.00pm Monday to Friday. Some have longer opening hours – please check the Council’s website for details.

The documents can also be viewed online at other libraries in the borough using available computer facilities.

Paper copies are available to view at:

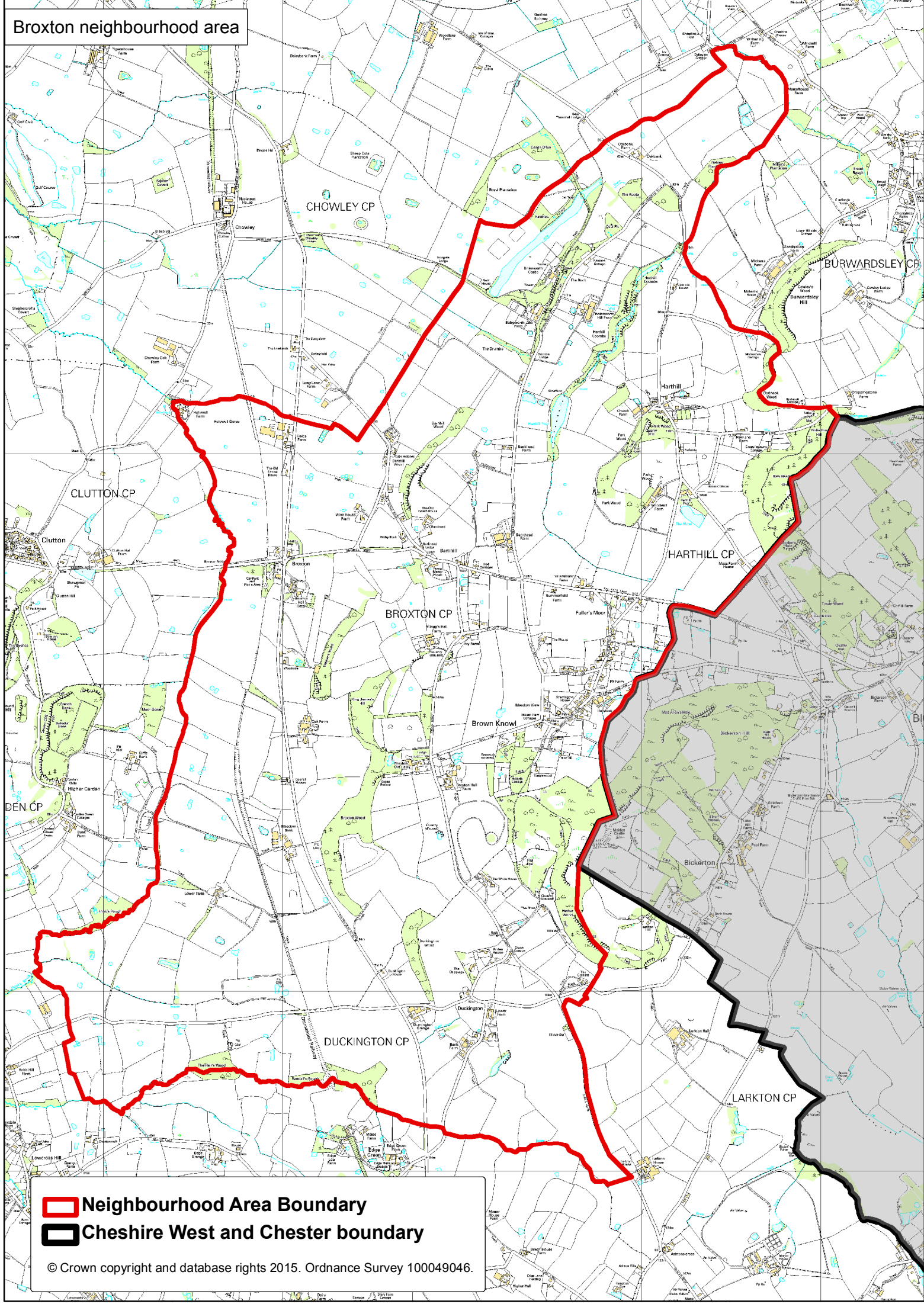
- Brown Knowl Methodist Church, Sherrington Lane, Brown Knowl, CH3 9JU.
- The Sandstone Pub, Nantwich Road, Broxton, CH3 9JH
- Customer Service Centre, The Forum, Chester, CH1 2HS;

Dated: 5 September 2016

Gerald Meehan
Counting Officer
Cheshire West and Chester Council
HQ, 58 Nicholas Street
Chester,
CH1 2NP

The Referendum Area
Broxton and District Neighbourhood Area

Broxton neighbourhood area



CHOWLEY CP

BURWARDSLEY CP

CLUTTON CP

BROXTON CP

HART HILL CP

DEN CP

DUCKINGTON CP

LARKTON CP

-  **Neighbourhood Area Boundary**
-  **Cheshire West and Chester boundary**